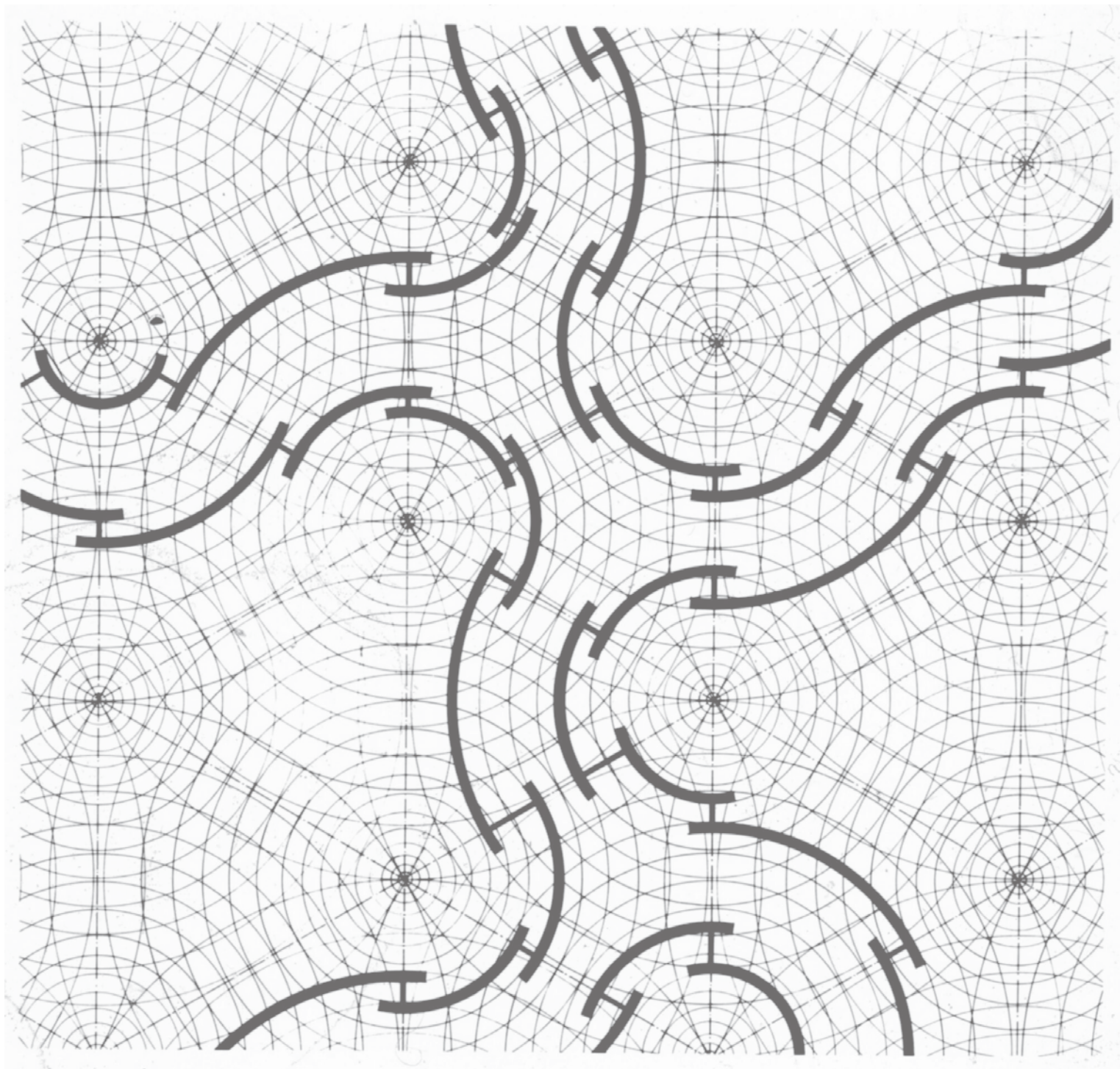


MOVING BOUNDARIES

HUMAN SCIENCES AND THE FUTURE OF ARCHITECTURE



WINTER COURSE – ITALY 2023

For more information visit
www.mb2023.org

VENICE
December 11 - 19

UMBRIA
December 20 - 23



TABLE OF CONTENTS

<u>01</u>	ABOUT
04	Mission Statement
06	Course Highlights
<u>07</u>	PROGRAM
07	VENICE
08	Perception and Behavior
20	UMBRIA
21	Atmosphere and Mood
<u>28</u>	CHAIRS
<u>30</u>	FACULTY
<u>39</u>	SUPPORTING FACULTY
<u>45</u>	FAQ
48	Travel Cost
<u>49</u>	SYLLABUS
<u>62</u>	SUPPORT
62	Sponsors
63	Information for Sponsors
64	Partners
65	Thank You
<u>67</u>	PARTICIPANTS' YEARBOOK

MOVING BOUNDARIES

HUMAN SCIENCES AND THE FUTURE OF ARCHITECTURE



The 3rd Edition of Moving Boundaries: Human Sciences and the Future of Architecture, directed by Tatiana Berger, Architect, Professor and Founder of Moving Boundaries, and co-chaired by Sarah Robinson, Architect and Professor and Vittorio Gallese, Scientist and Professor, offers an intensive 12-day course in the interface between disciplines concerned with design of the built environment and scientific disciplines concerned with human perception and behavior. These disciplines include neuroscience, neurophenomenology, cognitive science, environmental psychology, health sciences and others.

Grounded in the culture of Venice for 9 days, followed by northern Umbria, Italy for 3 days, participants will experience the rich cultural landscape of both locations and will visit and study the work of Carlo Scarpa and contemporary architects. Venice will be magical in winter, with fewer tourists and more access to local culture and unique neighborhoods.

A field trip will be offered to Treviso, the Brion Cemetery and Gipsoteca Canova by Scarpa, and to Fabbrica by Tadao Ando, among other sites. During the last three days, we will live and study in beautiful northern Umbria, in Castello di Solfagnano, located between Perugia and Gubbio. Thirty minutes away is the legendary St. Francis of Assisi Convent, which inspired Louis Kahn. Invited faculty include some of the most distinguished architects, designers, philosophers and scientists in the world.

This traveling course will offer a series of masterclasses, lectures, roundtable discussions, immersive workshops, sketching lessons and field trips, in which we will explore a new perspective that has been emerging from the rapidly evolving collaboration between architecture and the “natural human sciences” that include neuroscience, cognitive science, psychology, psychophysics, and experimental phenomenology, among others. On this journey, we will move across boundaries of several kinds. Some boundaries will be of a conceptual nature, separating the worlds of objective science, subjective experience, and intersubjective culture.



Other boundaries will be geographic: we will travel between the regions of Friuli-Venezia, Tuscany and Umbria in Italy, immersing ourselves in local traditions in architecture, building craft, urban planning, language, music, and cuisine.

We will pursue a number of questions foundational to the future of design, such as how the built environment is experienced by human beings in real time, how empirical methods can help to develop new tools and strategies for design, and how results of scientific research contribute to theory and practice of design. We will also explore the importance of regional culture, memory and identity in the making and experiencing of architecture.



The elements of architecture are not visual units or gestalt; they are encounters, confrontations that interact with memory.

Juhani Pallasmaa, *The Eyes of the Skin*

The course follows the first edition of our traveling workshop in Iberia, which took place in Spain and Portugal in July and August of 2022 and the second edition which took place in Guadalajara, Mexico.

This third edition in Italy will feature several new distinguished faculty members, a deeper investigation of two topics studied in Iberia and Mexico, multiple interactive sessions centered on participants, embodied learning opportunities during tours and sketching workshops in the city, and a focus on teaching practical applications of concepts from human sciences to architectural and interior design.



Participants will have a chance to present work and receive feedback during morning sessions. In addition to learning from the faculty and from one another during lectures and discussions, they will work on optional design exercises, in interdisciplinary small groups.

This course will feature lectures in which an architect or designer will be paired with a scientist, to promote interaction in a dialogical format.

The course is open to architecture and design professionals, including architects, urban planners, landscape architects, interior and product designers, artists, educators, authors, historians, environmental experts, health professionals, neuroscientists, cognitive scientists, sociologists, anthropologists and psychologists, as well as graduate and postdoctoral students in these disciplines.

Every participant will receive a Certificate of Completion at the end of the course.

MISSION STATEMENT

What is Moving Boundaries?

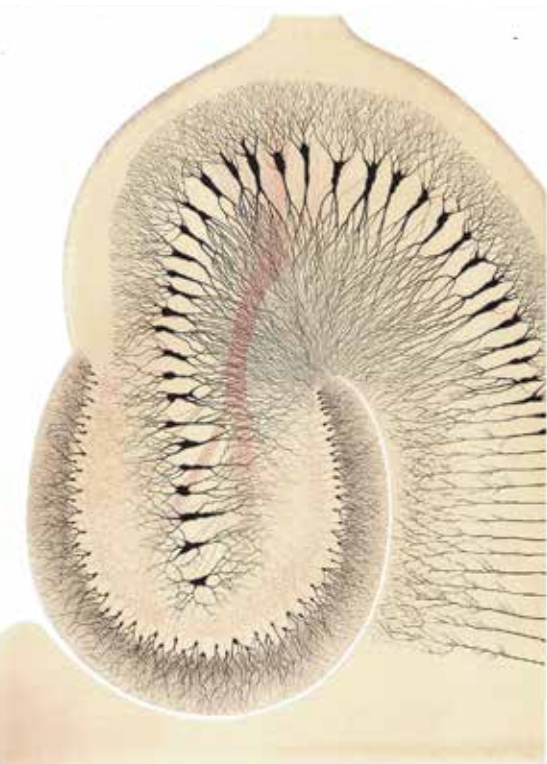
Our buildings, neighborhoods, and cities directly impact our health and well-being. This basic fact is appreciated increasingly across the full range of professions involved in the design and maintenance of the built environment. At the same time, we know little about how the relationship between people and environments works in detail: how exactly our experience and behavior, our emotions and engagement in the community, are all shaped by the built environment.

A number of scientific disciplines have been called to help us fill this gap. Most notably, they include the disciplines allied under the umbrellas of neuroscience and cognitive science. Encounters between scientists and design professionals produce an exciting new frontier of human knowledge; they lead to a new understanding of the roles and responsibilities of the designer.

Moving Boundaries is an international and interdisciplinary initiative seeking to disseminate this new understanding by means of education and advocacy. The initiative operates at the interface of the just mentioned scientific disciplines and such design disciplines as architecture, urban planning, landscape architecture, and interior design. Based in San Diego and La Jolla, California, which is the home of the venerable Academy of Neuroscience for Architecture (ANFA), connected by an active network of collaborations with kindred schools of design around the world, Moving Boundaries is poised to curate a global community of students, professionals, and organizations that share our vision and values.

The 2023 winter course and workshop in Italy, titled "Moving Boundaries: Human Sciences and the Future of Architecture," brings together a cadre of distinguished international speakers: scientists and architects, historians and philosophers, who will illuminate the many facets of the impact of the built environment on human health and well-being.

The geographical situation of this course is not accidental since one of our goals is to investigate how impacts of the built environment are grounded in the local culture. Unique atmospheres of Venice and the region of Umbria will give us ample opportunity for such study. The course will feature numerous tours, field trips and workshops in which we will uncover the rich cultural heritage of both regions, illustrating sustainable and resilient relationships of the person, community, and place.



What is more, the setting of Venice, one of Italy's most unforgettable and atmospheric cities, is the birthplace of Carlo Scarpa, whose work we will experience over the first nine days. Scarpa's work will illuminate many of the themes which are central to our investigation. Both regions of Venice and Umbria are well known for their distinctive vernacular craft, linguistic, musical and culinary traditions. The cultural setting will provide a grounding for our studies at the interface of human sciences and design.

Over its two weeks, the program will provide each participant with numerous opportunities to interact with some of the best minds in architecture, urban design, and science — during classes, roundtable discussions, tours and workshops — but also during many social events. We will learn together, from one another and from the unique environment of this course, gaining the strength for transforming architectural education and practice the world over.



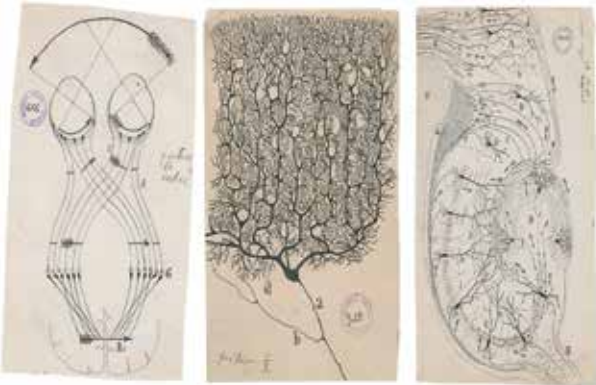
Every organism is in one sense continuous with its environment across the boundary of its skin, exchanging matter and energy.

James Gibson



In its larger aspirations, Moving Boundaries is designed to serve as a platform for collaboration between educators and scientists, practitioners and students of architecture, as well as with institutions of design, research, and learning. Our initiative is animated by ideas and creations of such notable architects as Kenneth Frampton, Richard Neutra, Frank Lloyd Wright, Alvaro Siza Vieira, Louis Kahn, Alvar Aalto, Carlo Scarpa, Luis Barragan, Balkrishna Doshi and Juhani Pallasmaa, and also by such innovative thinkers as Maurice Merleau-Ponty in France and John Dewey in the United States. Collective legacy of these individuals demands that we view design from an uncompromising humanistic perspective, committed to personal flourishing, and centered on the individual's physical health and psychological wellness.

COURSE HIGHLIGHTS



Innovative Interdisciplinary Curriculum at the Interface of Human Sciences, Architecture and Design

The Winter Course tuition includes lectures, masterclasses, round-table discussions, workshops, field trips, sketching sessions and social events in two regions in Italy. Bus transportation during the field trip outside Venice is also included. Experts in multiple disciplines collaborate to bring you a cutting-edge interdisciplinary program, curated with a dialogical format to explore the interface of sciences and design.



World Renowned Architects, Historians, Scientists and Philosophers Teach Together for the First Time

Study with some of the most distinguished architects, theorists, anthropologists, historians, scientists and philosophers in the world. In all, between 18 and 20 lecturers will join the course. Since the student group is limited to 75, you will have a chance to interact with lecturers not only during lectures and roundtables, but also during social events and field trips.

Create Friendships: Opportunities for Collaboration with Diverse International Cohort

Learn together with participants in multiple disciplines from around the globe during the course, and grow your network for future collaboration. This course is geared to professionals, educators, administrators in higher education, and upper level graduate students. Participants will be joining the course from 35 different countries. A limited number of need-based scholarships will be offered.



Visit Iconic Architecture and Landscapes

Visit iconic works of architecture in Venice and in the Treviso region, including multiple buildings by Carlo Scarpa and Fabrica by Tadao Ando. Experience the city of Venice and landscapes of Veneto and Umbria regions, learning from local experts about cultural heritage, craft traditions, music, cuisine, art, principles of urban planning, landscape, geography and more.



VENICE, ITALY



Venice, known in Italian as Venezia, is the major seaport and capital of both the province of Venezia and the region of Veneto, northern Italy. An island city, it was once the centre of a maritime republic. It was the greatest seaport in late medieval Europe and the continent's commercial and cultural link to Asia. Venice is unique environmentally, architecturally, and historically, and in its days as a republic the city was styled *la serenissima* ("the most serene" or "sublime").

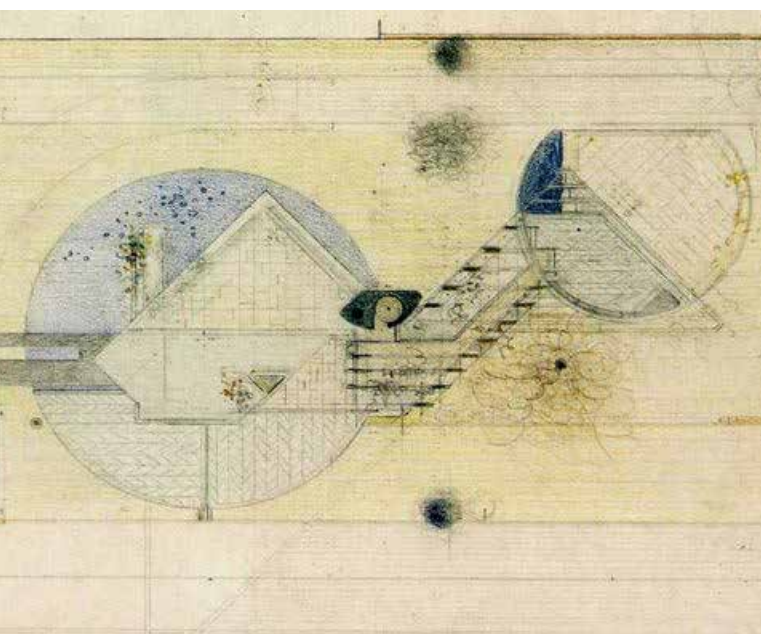
Today Venice is recognized as part of the artistic and architectural patrimony of all humanity, a fitting role for a city whose thousand-year economic and political independence was sustained by its role in global trading.

Venetian architecture is largely Gothic architecture, with its asymmetricality and emphasis on light. After the Renaissance, with its focus on rationalism and balance, architects started to incorporate some of its hallmarks (like rounded, rather than pointed, arches). Even so, they continued to blend Renaissance innovations with that same Gothic style.

Unlike other Italian cities, Venice had close ties to the East thanks to its vast trade networks. A lot of Venetian architecture, therefore, was taken from Byzantine and Moorish styles.

PERCEPTION AND BEHAVIOR

December 11th- 19th

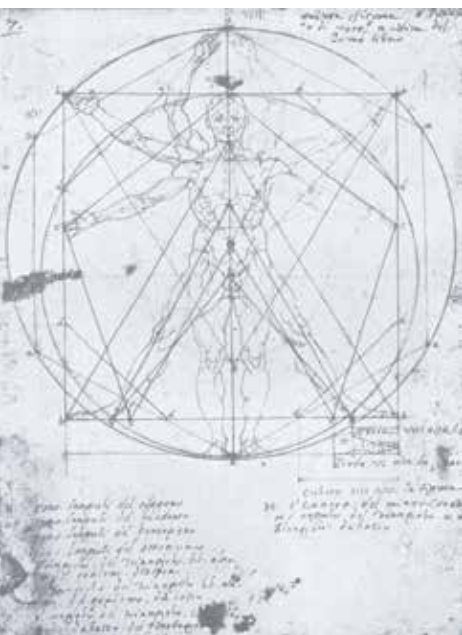


The architectural profession must place the concern for the full-blooded human being at the very foundation of its practice. Confronting this challenge using a new approach emerging in the rapidly evolving collaboration between architecture and the human sciences, we will investigate the experience of place through multiple disciplinary perspectives—in particular those of phenomenology and neuroscience. We will study how places shape one's behavior and how experiences arise in the interaction of sensory and motor systems, focusing on the tactile, acoustic and resonant qualities of space. Lectures about perception and imagination, haptics and memory, peripersonal space and embodiment will inform design applications. We will also discuss how ideas about movement and time can inform new strategies for architectural and urban design.

Designers need a framework capable of integrating concepts and methods developed by different disciplines. In the workshops and sketching sessions held during tours in the first week, we will delve into regional culture of Veneto, visiting multiple works of architecture, guided by local designers and historians. We will synthesize this knowledge by exploring how different human sciences could contribute to understanding place and culture.

VENICE

Monday, December 11



- 8:30 Coffee and Check-in at Ca' Dolfin Ca' Foscari
- 10:00 Opening Remarks and Faculty Intros
- 11:00 Sarah Robinson - Luminosity, Resonance and Depth in the Work of Carlo Scarpa
- 12:00 Break
- 12:30 Andrea Chiba - The Dynamics of Experience in Places
Q&A
- 2:00 Lunch with Team (Introductions)
- 4:00 Thomas Albright
- 5:00 Davide Ruzzon - Architecture Houses Human Habits, Emotions and Memory
- 6:00 Break
- 6:30 Discussion, moderated by Vittorio Gallese
- 8:00 Welcome Dinner (complimentary)
Celebration in Venice with participants and faculty

VENICE

Tuesday, December 12



- 9:00 Don Orione Cultural Center: Poster Presentations
- 10:00 Guido Pietropoli - Carlo Scarpa as Educator
- 11:00 Tobia Scarpa
- 12:00 Depart Don Orione for Visit Querini Stampalia by Carlo Scarpa (visits are 1:00-3:00pm). See tour schedule.
Lunch
- 4:30 Alberto Pérez-Gómez (remote) - The Compass of Architecture
- 5:30 Q&A Discussion
- 6:15 Discussion in teams (all faculty and participants)
- 7:30 Dinner

VENICE

Wednesday, December 13



- 9:00 Don Orione Cultural Center: Poster Presentations
- 10:00 Tim Ingold - The Earth, the Sky and the Ground Between
- 11:00 Break
- 11:15 Sarah Williams Goldhagen - Can Place Attachment be Designed?
- 12:15 Q&A Discussion
- 2:00 Lunch
- 4:00 Vittorio Gallese - Embodied Simulation and a New Take on the Relationship Between Perception, Action and Imagination
- 5:00 Andrea Pinotti - Being Here While Being There. The Experience of Space and the Challenge of Immersive and Emersive Technologies
- 6:00 Break
- 6:30 Q&A Discussion, moderated by Sarah Robinson
- 7:30 Dinner

VENICE

Thursday, December 14



- 10:00 Visit Negozio Olivetti by Carlo Scarpa
- 12:30 Sketching in Venice and Lunch
Team Discussions in Piazza San Marco
Free Time
- 4:00 Meet for the Workshop at Palazzo Michiel
- 4:30 Workshop 1
Group 1 Chiba, Berger, Ferroni
Group 2 Goldhagen, Robinson
- 6:00 Break
- 6:30 Small Team Meetings
- 7:30 Dinner

VENICE

Friday, December 15



Free Day
Night Out at 7:00 pm

FIELD TRIP OUTSIDE VENICE

Saturday, December 16



- 8:45 Meet at Treviso Station
- 9:15 Board tour buses
- 10:00 Visit Tomba Brion and Gipsoteca
Canova, by Carlo Scarpa
(staggered visits in small groups)
- 2:00 Lunch and Free Time
- 4:00 Visit Fabbrica, by Tadao Ando
Winter Party at Fabbrica
- 8:00 Return to Treviso Station

VENICE

Sunday, December 17



- 9:00 Coffee/Poster Presentations - Palazzo Michiel
- 10:00 Juhani Pallasmaa (remote) - The Ethical and Existential Meaning of Beauty
- 11:15 Break
- 11:45 Francesca Ferroni - Space or Place? A Look at Architecture from Within
- 12:45 Q&A Discussion, moderated by Renato Bocchi
- 2:00 Lunch
- 4:00 Meet for the Workshop at Palazzo Michiel
- 4:30 Workshop 2
 - Group 1 Goldhagen, Robinson
 - Group 2 Berger, Ferroni
- 6:00 Break
- 6:30 Small Team Meetings
- 7:30 Dinner

VENICE

Monday, December 18



- 9:00 Coffee/Poster Presentations at
Aula Magna Trentin, Ca' Foscari
- 10:00 Cleo Valentine - Architectural Neuroimmunology:
Examining the Impact of the Built Environment
on Human Physiology
- 11:00 Q&A Discussion, moderated by David Kirsh
- 12:00 Break and Team Discussion
- 2:00 Lunch
- Lectures by Supporting Faculty
- 4:00 Ludovica Gregori
- 4:30 Sofia Boarino
- 5:00 Ana Karen Angulo
- 5:30 Break
- 6:00 Q&A Discussion
- 7:30 Dinner

VENICE

Tuesday, December 19



- 9:00 Coffee/Poster Presentations at
Aula Magna Trentin, Ca' Foscari
- 10:00 Renato Bocchi - On the Importance of Immaterial Factors
in Architecture
Q&A Discussion
- 11:30 Break
Lectures by Supporting Faculty
- 12:00 Valentina Rizzi
- 12:30 Jessica Patrick
- 1:00 Andrea de Paiva
Q&A Discussion
- 2:00 Lunch
- 4:00 Meet for the Workshop in Palazzo Michiel
- 4:15 Workshop 3
Group 1: Bocchi, Valentine
Group 2: Free time in Venice
- 6:00 Early Dinner (and pack)

VENICE

Ca' Foscari, University of Venice

Ca' Foscari University of Venice is a public university in Venice. Since its foundation in 1868, it has been housed in the Venetian Gothic palace of Ca' Foscari, from which it takes its name. The palace stands on the Grand Canal, between the Rialto and San Marco, in the sestiere of Dorsoduro. Founded on August 6, 1868 as the "Scuola Superiore di Commercio" (Advanced School for Commerce), Ca' Foscari was the first Italian institution to deal with advanced education in Business and Economics. The original main office is still found in the grand gothic palace "volta de canal" (on the bend of the Grand Canal), in the heart of Venice.



Ca' Foscari offers its venues, true historical, artistic, cultural and architectural "gems" in the heart of Venice, to external bodies and institutions.

The Ca' Dolfin, in which some of our lectures will happen is the ideal setting for cultural, scientific and teaching events.

The Aula Magna Silvio Trentin in Ca' Dolfin is a spacious sixteenth-century hall located on the first floor of the palace bearing the same name. It is a grand and captivating space, adorned with ceilings and walls featuring frescoes in the style of Tiepolo's school, medallions with allegorical figures, Murano chandeliers, and mirrors.

Once, the hall housed ten historical-themed canvases by Giambattista Tiepolo, which are now exhibited at the Hermitage Museum in St. Petersburg, the Kunsthistorisches Museum in Vienna, and the Metropolitan Museum of Art in New York.

VENICE

Palazzo Michiel

Palazzo Michiel del Brusà is an historical Venetian palace situated at the north-east side of the Canal Grande, in the Cannaregio district. The palazzo has its entrance on the Strada Nuova—the busy and essential pedestrian axis that links Venice Station to the Rialto Area—nearby the Campo Santi Apostoli; it is 6 minutes to the Rialto Bridge and 4 minutes from the Ca' d'Oro bus-boat stop.



Palazzo Michiel's façade dates back to the 15th century and is an example traditional Venetian gothic palace structure with a four arches polifora balcony.

The rest of the palace, including the interior rooms and the water entrance were entirely refurbished in the baroque. In the main ballroom one can find the frescoes of Jacopo Guarana decorating the ceiling.



This location hosts the headquarters of ECC-Italy and is also used for special events.

VENICE

Centro Culturale Don Orione Artigianelli



This center originated in 1423 as the Convent of the Gesuati, a community of lay friars dedicated to caring for the sick. They were called Gesuati due to their frequent invocation of the name of Jesus. In the late 15th century, they began the construction of the church of "Santa Maria della Visitazione."

In 1669, the Convent and the Church were acquired by the Dominican Fathers, who, with the increasing number of followers, felt the need for a new temple.

The architectural design was entrusted to Giorgio Massari, and in 1726, construction work commenced on the new Church, which was dedicated to "Santa Maria del Rosario." After the completion of the works, the valuable artworks from the former Church of the Gesuati were transferred to the new church. The former church was transformed into a public library, housing the precious book collection donated by Apostolo Zeno in 1750.

In a nostalgic ambiance, you can discover spaces for cultural gatherings and hospitality within a renovated ancient convent equipped with modern technologies. The Center accommodates groups, individuals, and families, providing them with the opportunity to stay in a private and serene environment in the historic center of Venice, just behind the Gallerie dell'Accademia.

It also offers direct views of the Zattere promenade along the Giudecca Canal.



The entire complex revolves around three 18th-century cloisters and a 15th-century cloister, which houses the Church of Santa Maria della Visitazione. With its vastness, architectural beauty, gardens, and peacefulness, it represents an oasis within the city.

REGION OF UMBRIA



From Assisi to Perugia, Gubbio and Castelo di Solfagnano, Umbria is a truly enchanting tourist destination. Peaks covered in lush forests and large valleys outlined by rivers, lakes and waterfalls; surrounded by villages and castles, crossed by paths steeped in history, art and culture, in a natural environment that helps to restore the body and soul: Umbria, the Green Heart of Italy, is all this and much more.

Umbria is situated in central Italy, and it's frequently named 'the green heart of Italy' for its stunning natural beauty and for its position. Rich in medieval architecture and art, there are the greatest churches, monasteries and basilicas erected during the middle ages, perfectly preserved, and they are all situated in little medieval and Etruscan towns, rich in folklore and amazing to visit.

Umbria is also a famous destination for fine food and wine: olive oil, red wine and truffles are the most famous products of this region.

ATMOSPHERE AND MOOD

December 20th - 23rd



The concept of architectural atmosphere blends sensory and emotive aspects of experience. We will investigate how architectural atmospheres are created by the interaction of seeing, hearing, haptics, and olfaction, and also the senses that register one's own posture, balance, and movement. We will also study the intricate relationship between emotions, mood and cognitive faculties, and how this relationship is fundamental to experiencing special atmospheres which arise in architectural spaces. The study of atmosphere will allow us to investigate how insights from the objective, third-person perspective of the sciences can be integrated into design. In the final days, we will explore how architectural atmosphere and mood can be captured by different methods of architectural representation and how notions of spatial attunement and embodiment can dramatically alter our approach to design education and practice.

FLORENCE | PERUGIA

Wednesday, December 20



9:26 Take train at 9:26 or 10:26am from Venezia S.Lucia station
or to Firenze S.Maria Novella station
10:26 Get your own ticket ahead of time

Self-organized - You may reserve luggage storage in
Florence here:

<https://www.stowyourbags.com/en/shop/florence/luggage-storage-florence-train-station/>

Lunch in Florence

Time to explore Florence

4:14 Take train from Florence to Perugia Ponte San Giovanni
or station, then transfer to hotel

6:14 Note: buses will transfer all participants who take these 2 trains.
Make sure to get your own ticket well ahead of time. These
are smaller trains, which may sell out!

(Optional) Stay overnight in Florence: self-organized by
those who need more time in the city

UMBRIA

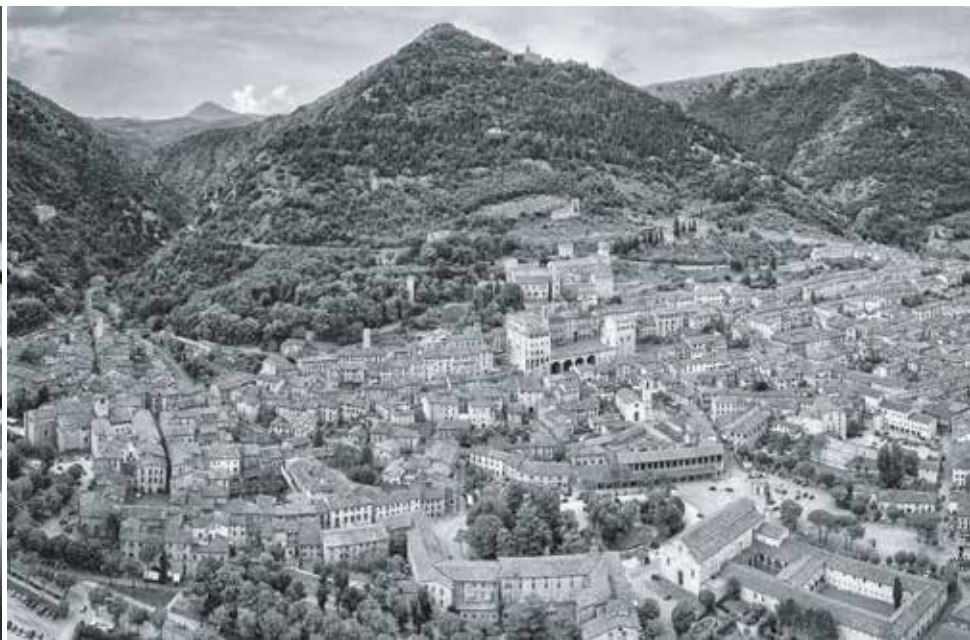
Thursday, December 21



- 8:30 Coffee
- 09:30 David Kirsh - Science of Architectural Atmosphere
- 10:45 Sarah Williams Goldhagen - Researching
Neuroarchitectural Design Aesthetics
Q&A Discussion
- 12:00 Break
- 12:30 Workshop 4
Group 1: Canepa, Milesi
Group 2: Bocchi, Valentine
- 2:30 Lunch in Castello
- 4:30 Alberto Pérez-Gómez (remote) - In Quest of Attuned
Architectural Atmospheres: Contributions of Enactive
Cognitive Theory and Neurophenomenology
Q&A Discussion
- 6:00 Free Time
- 7:30 Dinner

UMBRIA

Friday, December 22



- 9:00 Coffee/Poster Presentations
- 10:00 Satchin Panda - Optimizing Built Environment to Nurture Health and Enhance Mood
- 11:30 Break
- 12:00 Elisabetta Canepa - Architectural Atmospheres: Experimenting Phenomenology and Neuroscience
Q&A Discussion
- 2:00 Lunch at Castello
- 3:15 Bus transfer to Gubbio
- 4:00 Workshops with Local Craftsmen Stone - Iron - Ceramics
Museum of Arts and Crafts
- 6:00 Walking Tour - Traditional Performance
- 8:00 Dinner

UMBRIA

Saturday, December 23



- 9:00 Coffee
- 10:00 Edoardo Milesi - Beauty and Creativity
- 11:00 Q&A Discussion
- 11:30 Break
- 12:00 Maria Chiara Monacelli
- 12:45 Arkar Hein (remote)
- 2:00 Farewell Lunch (complimentary) and Ceremony:
- 4:30 Certificates of Completion at Castello di Solfignano
- Program Ends - Free Time

UMBRIA

Castello di Solfagnano



Castello di Solfagnano is a luxury property born inside a noble castle, dating back to the 12th century. A place of regeneration of both the soul and the body where well-being becomes vacation, where experience, thanks to the cellars and holistic paths, becomes knowledge and passion. Solfagnano Castle is the upmost luxury of well-being in Umbria: the green heart of Italy. Located between Florence and Rome, just a few miles from Perugia and Assisi, the Castle's roots go back to the Middle Ages.

The Mansion is an elegant eighteenth-century noble building that stands imperiously on the Marinello hill. Situated on a sinuous valley, the 60-hectare estate is home to parks, vineyards, gardens and an agricultural company that still operates with traditional natural methods aimed at enhancing the raw materials that our land has to offer to us.

“

There are few moments in one's life that rise to the level of unforgettable experiences. Marriage is one, the birth of a child another. Two weeks ago I returned from a conference of architects, scientists, planners, medical professionals and psychologists that will remain one of the truly profound experiences of my life.

“

The knowledge and passion of the presenters, coupled with their deep excitement for sharing their insights were part of the true spirit of the conference: discovery, optimism and contribution to humanity.

“

Meeting and interacting with a group of spectacular international scholars who demonstrated the highest level of expertise in their areas (and beyond!) was a special treat for all participants.

“

Moving Boundaries was an incredible opportunity to attend lectures by scientists, architects and authors whom I have always treasured. Listening to them present their work, that I had read before so many times, brought many unexpected insights - indeed a remarkable experience!

– Participants of Moving Boundaries 2022-23



*Architect, Urban Designer
Professor, MB Collaborative,
Founder and Director of Moving
Boundaries
USA and Portugal*

Tatiana Berger (M.Arch, Princeton University, B.A. in Arch., UC Berkeley) is an architect, urban designer and educator. She has worked for over 30 years in the U.S., Portugal, Spain and Austria. Her built works, collaborations and community plans were published in international periodicals and presented in exhibitions in Europe and U.S. Berger worked with Richard Meier in New York, was Director of the Sochi Olympics 2014 project for ILF Engineers and project architect for Baumschlager-Eberle in Bregenz, Austria. From 1997-2004 she worked as project architect and manager in the office of Alvaro Siza in Porto. Berger's built work, designed in collaboration with architects named above, is found in Porto, Lisbon and Viana do Castelo in Portugal, and also in Austria, the Netherlands, China, Russia and the U.S. In addition to architecture, her experience in professional practice includes landscape design and urban planning, furniture/product design, and construction administration.

Berger is Founder of Moving Boundaries Collaborative, which provides educational services and design/consulting services. She is guest lecturer at NAAD in Venice, ETH Zurich, NeuroArq Brazil, NAD Chile, and Artclever. She was Associate Professor of Architecture and Urbanism at the NewSchool of Architecture & Design in San Diego and Professor of Architecture at the Boston Architectural College.

A member of the Advisory Council of the Academy of Neuroscience for Architecture (ANFA), she developed a new curriculum in architectural theory and studio with a focus on ANFA themes as faculty in the pioneering Neuroscience for Architecture Program at NewSchool. In her role as Liaison for Education and curator of lecture series and symposia, she leads the ANFA Center for Education (ACE), an international forum for educators dedicated to reimagining design education.

She is co-founder of the Compostela Institute, a laboratory for research and education in environmental design, providing courses and workshops since 2010 in anthropology, cultural studies and building crafts in Santiago de Compostela, Spain. She has lectured internationally on topics in architectural theory, urbanism and health, regionalism, and transdisciplinary design education. She is increasingly involved in research in dynamic sensory experience of the built environment informed by knowledge from the human sciences.



*Architecture Professor, Author
Aalborg Univ., Denmark
NAAD, Venice, Italy*

Chair Professor of Architecture

Sarah Robinson is an architect, writer and educator whose practice is based in Pavia, Italy. Her writing and research is concerned with the many ways that the built environment shapes body, mind and culture. Her books, *Nesting: Body, Dwelling Mind* (William Stout, 2011), *Mind in Architecture: Neuroscience, Embodiment and the Future of Design* with Juhani Pallasmaa (MIT, 2015) and *Architecture is a Verb*, (Routledge, 2021) are among the first works to engage the dialogue between architecture and the cognitive sciences.

Holding degrees in both philosophy and architecture, she was the founding president of the Frank Lloyd Wright school of architecture board of governors. She is Adjunct Professor in Architecture, Design and Media Technology at Aalborg University, Denmark, and she is a member of the scientific board of NAAD at IUAV, Venice.



*Neuroscience Professor, Author
University of Parma, Italy*

Chair Professor of Neuroscience

Vittorio Gallese, MD, studied medicine at the University of Parma, Parma, Italy, and was awarded a degree in Neurology in 1990. He is a Full Professor of Psychobiology Dept. of Medicine and Surgery of the University of Parma, Honorary Fellow at the Institute of Philosophy, School of Advanced Study of the University of London, UK and Adjunct Senior Research Scholar at the Dept. of Art History and Archeology, Columbia University, New York. He is coordinator of the PhD Program in Neuroscience and Director of the Doctoral School of Medicine of the University of Parma. As a cognitive neuroscientist, his research focuses on the relationship between the sensory-motor system and cognition, both in non-human primates and humans using a variety of neurophysiological and functional neuroimaging techniques applied to the study of intersubjectivity, empathy, language, mindreading and aesthetics. Among his major contributions is the discovery, together with the colleagues of Parma, of mirror neurons, and the elaboration of a theoretical model of basic aspects of social cognition, Embodied Simulation Theory.

Gallese has done research at the University of Lausanne, Switzerland, at the Nihon University, Tokyo, Japan, at the University of California at Berkeley and at the Berlin School of Mind and Brain of the Humboldt University of Berlin. He has been George Miller visiting professor at the University of California at Berkeley. In 2007 he received together with Giacomo Rizzolatti and Leonardo Fogassi the Grawemeyer Award for Psychology, for the discovery of mirror neurons. He received the Doctor Honoris Causa from the Catholic University of Leuven, Belgium in 2009 and the Arnold Pfeffer Prize for Neuropsychanalysis from the International Society of Neuropsychanalysis, New York, in 2010, the Musatti Prize from the Italian Psychoanalytic Society in 2013, the Kosmos Fellowship from the Berlin School of Mind and Brain in 2014, the Einstein Fellowship for 2016-2020, and the Alexander von Humboldt Forschung Preis in 2019. Gallese has published over 300 papers in international peer-reviewed journals and edited books and three books.



Architecture History Professor
McGill University, Montreal
(remote)

Alberto Pérez-Gómez was born in Mexico City where he studied architecture and practiced. He was awarded an M.A. and a Ph.D. by the University of Essex (England). He has taught at London's Architectural Association and at universities in Mexico, the US and Canada. In 1983 he became Director of Carleton University's School of Architecture and in 1987 was appointed Bronfman Professor of Architectural History at McGill University in Montreal, where he founded the History and Theory Post-Professional (Master's and Doctoral) Programs. He became Emeritus Professor in January, 2020. Alberto Pérez-Gómez's research interests revolve around phenomenology, enactive cognitive science and hermeneutics in architecture. He continues to publish extensively in periodicals and chapters of books. His main books are still in print: *Architecture and the Crisis of Modern Science* (MIT Press, 1983) diagnosed the limitations of functionalist (instrumental) and formalist approaches in architecture. His latest book, *Attunement, Architectural Meaning after the Crisis of Modern Science* (2016) examines the issue of atmosphere and its relationship to traditional concepts of place, harmony and Stimmung, leading to an enquiry on the importance of narrative language in the generation of significant architecture.



Architect
Porto, Portugal
(remote)

Álvaro Joaquim de Melo Siza Vieira is one of the most distinguished and highly awarded architects in the world. He works in Porto, Portugal. "Every design", says Siza, "is a rigorous attempt to capture a concrete moment of a transitory image in all its nuances. The extent to which this transitory quality is captured, is reflected in the designs: the more precise they are, the more vulnerable". Siza studied at the University of Porto School of Architecture from 1949 through 1955, completing his first built works (four houses in Matosinhos) even before ending his studies in 1954.

In 1966, Siza began teaching at the University, and in 1976, he was made a tenured Professor of Architecture. In addition to his teaching there, he has been a visiting professor at the Graduate School of Design, Harvard University; the University of Pennsylvania; Los Andes University of Bogota; and the Ecole Polytechnique of Lausanne. In addition, he has been a guest lecturer at many universities and conferences throughout the world, from the United States, Colombia and Argentina to Spain, Germany, France, Norway, the Netherlands, Switzerland, Austria and England in Europe.

He received the Pritzker Prize in 1992. He also received honors from foundations and institutions in Europe, including the Alvar Aalto Foundation Gold Medal in 1988, the renowned Mies van der Rohe Foundation Award the Borges & Irmao Bank in Vila do Conde, Portugal (1982-86) and many others.



*Cognitive Science Professor
UC San Diego, USA*

Andrea Chiba is a professor in the Department of Cognitive Science and in the Program for Neuroscience at the University of California, San Diego. Dr. Chiba earned her bachelor's from the University of California, Berkeley and subsequently taught high school math. She earned her PhD in neuroscience from the University of Utah. She is Co-Director and the founding Science Director of the Temporal Dynamics of Learning Center, an NSF Science of Learning Center. The Center research is focused on the importance of time and timing in various aspects of learning, from the level of the synapse to social interactions. Chiba is involved in many Center projects that allow cross-species comparisons of learning and memory, bridging from rodent to human.

Dr. Chiba's Laboratory is focused on gaining an understanding of the neural systems and principles underlying aspects of learning, memory, affect, and attention, with an emphasis on neural plasticity. Work in her laboratory is highly interdisciplinary, using a variety of neurobiological, neurochemical, neurophysiology, computational, robotic, and behavioral techniques. Dr. Chiba has authored dozens of papers and other publications and has organized and participated in international workshops to help educators and policy-makers understand how the science of learning provides a strong foundation for educational excellence.



*Professor of Aesthetics
Department of Philosophy of the
University of Milan*

Andrea Pinotti is professor in Aesthetics in the department of Philosophy "Piero Martinetti", Università di Milano. His research focuses on image theories and visual culture studies, virtual and augmented reality, memorialisation and monumentality, empathy theories, and the morphological tradition from Goethe to the present day.

He has been fellow of various international institutions, including the Italian Academy at Columbia University, the Warburg Institute in London, the ZFL in Berlin, the IEA and the FMSH in Paris. Among his publications the volumes *Il corpo dello stile. Storia dell'arte come storia dell'estetica a partire da Semper, Riegl, Wölfflin* (1998), *Memorie del neutro. Morfologia dell'immagine in Aby Warburg* (2001), *Empathie. Histoire d'une idée de Platon au post-humain* (2016), *Cultura visuale. Immagini sguardi media dispositivi* (in collaboration with Antonio Somaini, 2016). In 2018, he was awarded the Wissenschaftspreis der Aby-Warburg-Stiftung in Hamburg. He is currently directing an ERC-Advanced project entitled *An-iconology. History, Theory, and Practices of Environmental Images* (2019-24).



*Systems Designer
NeuroArchitecture Researcher
PhD Candidate
University of Cambridge, UK*

Cleo Valentine is a systems designer, neuroarchitectural researcher and doctoral candidate at the University of Cambridge, Department of Architecture. Her research investigates the impact of visual exposure to selected architectural forms on neuroinflammatory responses. In doing so, this research aims to establish the field of architectural neuroimmunology and to support the creation of a healthier built environment.

Cleo received her MPhil in Architecture and Urban Studies from the University of Cambridge, before which she earned her MSc in Sustainable Urban Development at the University of Oxford and received her Bachelor's in Urban Systems and Economics from McGill University and the University of Copenhagen. She has worked as a computational systems designer at Open Systems Lab (formerly Wikihouse) and has held positions as the Neuroaesthetics Fellow at The Centre for Conscious Design and as a guest tutor at the Royal College of Art and the Architecture Association in London. She is currently an associate at Cambridge Architectural Research Ltd. where she provides consultancy services on public health and architecture.



*Cognitive Science Professor
UC San Diego, USA*

David Kirsh is professor and past chair at the Cognitive Science Department, University of California San Diego. During 2017-2019 he was Leverhulme Visiting Professor at The Bartlett School of Architecture University College London where he continues part-time. He is currently President of ANFA. He received a D. Phil. From Oxford Univ in Philosophy & Cognitive Science, did post-doctoral work in Artificial Intelligence at MIT (AI Lab), and held Research or Visiting Professor positions at: MIT - Comp Sci, Stanford University - Grad School of Education, Comp Sci, Music upcoming, Univ College London - Comp Sci, Architecture, Paris University - Sociology, Comp Sci, Adjunct Prof in Dance at Trinity Laban Conservatoire of Music and Dance, London.

He has written extensively on situated cognition, especially on how the environment can be shaped to simplify and extend cognition, including how we intelligently use space, and how we use external representations as an interactive tool for thought. He runs the Interactive Cognition Lab at UCSD where the focus is on the way humans are closely coupled to the outside world, and how human environments have been adapted to enable us cope with the complexity of everyday life. Some recent projects focus on ways humans use their bodies as things to think with, specifically in dance making, how thought unfolds in many modalities, and how new media tools are reshaping thought, especially in the different stages of design. He is currently working on a new theory of interaction and visual reasoning.



*Architecture Professor
NAAD, Venice, Italy*

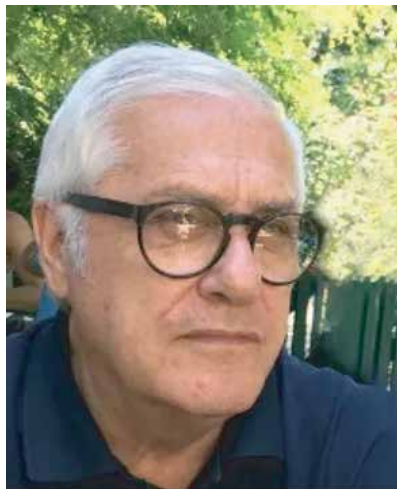
Davide Ruzzon is an Architect, Director, and Scientific Responsible for TUNED, a Lombardini22's branch in Milan. He is working on applying the knowledge from neuroscience to the design of private and public buildings in open urban spaces. He is also the NAAD Founder and Director. Arrived at its fourth edition, 'Neuroscience Applied to Architectural Design' is an annual Postgraduate Course at the IUAV University of Venice. This Course involves professionals, scholars, young architects, scientists, and psychologists from all over the world, in an interdisciplinary path toward an evidence-based design, able to merge science and architecture, well beyond the divide between biology and culture.

Davide is the Co-Director, and Founder, with Sarah Robinson and Alessandro Gattara, of the new architecture magazine *Intertwining*, now on its third issue. He wrote books and papers, edited collections of essays, and organized seminars and conferences. He also has built public and private buildings and has taken part in *International Design*. His last book is titled "Tuning Architecture with Humans".



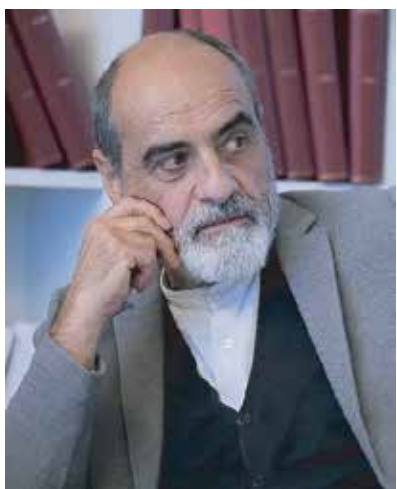
*Neurobiologist,
Postdoctoral Fellow
University of Parma, Italy*

Francesca Ferroni is a neurobiologist affiliated with the University of Parma, Italy. She undertakes research in intricate areas such as the bodily self, schizophrenia, multisensory integration, and peripersonal space. Dr. Ferroni is recognized for her contributions to Cognitive Neuroscience and Neurobiology. In her current role as a postdoctoral fellow at the University of Parma, Dr. Ferroni's work has garnered global recognition, evidenced by over 285 citations in scholarly publications. This points to the far-reaching impact and ongoing relevance of her research within the scientific community. Dr. Ferroni has an extensive portfolio of 15 scholarly publications, a testament to her profound understanding of her field and her consistent commitment to furthering knowledge within it. These works provide a comprehensive overview of her academic exploration, reaffirming her position as a key contributor to the field of neurobiology.



Architect,
Professor and Author
Rovigo, Italy

Guido Pietropoli was born in Rovigo (Italy) in 1945 and graduated from IUAV in 1970 with Carlo Scarpa, with whom he collaborated until 1978, the year of the architect's death in Sendai (Japan). In those years he has collaborated on the following projects: Tomba Brion in San Vito di Altivole, monumental organ for the Basilica dei Frari in Venice, Banca Popolare and Villa Il Palazzetto in Monselice, restoration and portal of the former Convent of San Sebastiano, seat of the Faculty of Letters and Philosophy of the Università Ca' Foscari in Venice, staging of Scarpa's personal exhibition at the RIBA (Royal Institute of British Architects in London) and at the Domus Comestabilis in Vicenza, Country Club in Vicenza and other. After Studio Pietropoli has carried out the design of residential buildings, urban redesign, restoration of historic factories and paleo-industrial architectures and industrial design products. He collaborated with the Japanese company YKK. Guido Pietropoli taught at the IUAV, the Faculty of Architecture in Bologna (Cesena branch) and lectured at the following Italian and foreign museums and institutions: Museo MAXXI in Rome, Museo di Castelvecchio in Verona, Politecnico di Milano, Fondazione Benetton Studi e Ricerche in Treviso, MAK in Wien, Soane's Museum in London, the Watari-um in Tokyo, University of Tennessee, Irvin Chanin School of Architecture at the Cooper Union in NYC. He is currently working on a book of drawings by Carlo Scarpa for the Brion Memorial in which about 330 drawings (selected from the 2,200 kept at the MAXXI in Rome).



Architect
Archos Studio, Venice, Italy

Edoardo Milesi studied at the IUAV University of Venice and graduated in 1979 from the Polytechnic University of Milan with Franca Helg. Expert in landscape and environmental protection, he has achieved numerous specializations including architectural ecology, religious architecture and garden art. In 1990, he founded Archos studio, with which he carries out design activities spanning different areas and sizes, and which is characterized by constant research into environmental, social and construction aspects of architecture. In addition to his professional practice, he constantly participates in cultural debate about contemporary architecture and is interested in disseminating and discussing his own experiments. In 2008 he founded the magazine ArtApp, of which he is editor-in-chief. Since June 2009, he has been president of the cultural committee of the Bertarelli Social and Cultural Foundation. In 2014, he founded the cultural association Scuola Permanente dell'Abitare (Permanent School of Living). From April 2019 to April 2022 he was a member of the Board of Directors of the Fabbriceria del Duomo of Siena, called "Opera della Metropolitana". He is an active member of the University of Sciences, Letters and Arts of Bergamo and from 2020 he is a member of the Scientific Committee of the Italian Coastal Landscape Observatory of Legambiente. Since 2021 he has been President of the Discipline Board 5 of the Order of PPC Architects of Bergamo; President of the Landscape Commission of the Municipality of Mozzo and a member of the European Jury.

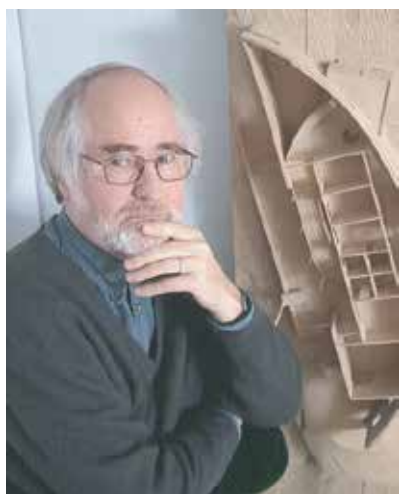


Architect, Researcher
EU Marie Curie Fellow, Italy

Elisabetta Canepa (MS.Eng., Ph.D.) is an architect and researcher from Genoa, Italy. She is currently an EU Marie Curie Fellow running the RESONANCES project (2021–2024) in collaboration with the University of Genoa, Kansas State University, and Aalborg University.

Her research focuses on the hybrid connection between architecture and cognitive neuroscience, analyzing topics such as atmospheric dynamics, the emotional nature of the architectural experience, embodiment theory, the empathic phenomenon between humans and space, and experimentation in virtual reality. Dr. Canepa is an Advisory Council member of the Academy of Neuroscience for Architecture (ANFA), based in San Diego, California. She is a faculty member in the Neuroscience Applied to Architectural Design (NAAD) Master's Program at the Luav University of Venice and serves as an Adjunct Professor in the Architecture Department at Kansas State University. Elisabetta Canepa wrote *Architecture is Atmosphere: Notes on Empathy, Emotions, Body, Brain, and Space* (2022), published by Mimesis International.

She is a member of the scientific board of the *Interfaces* book series (New Prairie Press), investigating the interplay of design, philosophy, and biology through the lens of meaning in architecture.



Architecture Professor
Architect, Author
Helsinki University, Finland
(remote)

Juhani Pallasmaa is a Finnish architect, professor of architecture and former dean at the Helsinki University of Technology. Pallasmaa has written and lectured extensively across the world for over 45 years on architecture, the visual arts, environmental phenomenology, and cultural philosophy. Among the many academic and civic positions he has held are those of Director of the Museum of Finnish Architecture and head of the Institute of Industrial Arts, Helsinki. He established his own architect's office in 1983 in Helsinki. He has taught architecture at many universities around the world, including the Washington University in St. Louis, the University of Illinois at Urbana-Champaign, and Frank Lloyd Wright's Taliesin School. Pallasmaa has lectured widely in Europe, North and South America, Africa and Asia.

Among Pallasmaa's many books on architectural theory is *The Eyes of the Skin – Architecture and the Senses*, a book that has become a classic of architectural theory and is required reading in many schools of architecture around the world. Pallasmaa is the former Chair of the Pritzker Prize Committee. He is a member of the Finnish Association of Architects and an honorary Fellow of the American Institute of Architects.



*Architecture and Urban Design
Professor
IUAV Univ. Venice*

Renato Bocchi, full professor of architectural and urban design at the IUAV University of Venice until 2019 and director of the Department of architectural design from 2006 to 2009. He is currently a member of the Doctorate Schools at IUAV, Venice and Sapienza University, Rome. He held seminars, workshops and conferences in many European universities and was a visiting professor at the Universidad Nacional de La Plata, Argentina, in 2005 and 2011.

The main field of his research is the relationship between architecture, art and landscape. On these topics he coordinated (with Cunico and Fontanari) the series of eight international conferences "Dessiner sur l'herbe", between 2004 and 2012. He was responsible for cultural initiatives between IUAV University and the Venetian museums and cultural institutions, including the program "Salotto Longhena" with Muve in Ca' Pesaro Art Museum. He was editor of some architectural magazines in Italy and national coordinator of the large research programme "Re-cyle Italy", between 2013 and 2016.

His numerous publications include: *La materia del vuoto*, Universalia, Pordenone, 2015, and *Spazio, arte, architettura*, Carocci, Rome 2022.



*Author, Consultant
New York, USA*

Sarah Williams Goldhagen, PhD. (Columbia University) and former Harvard professor, writes, lectures, and consults for a wide range of public and private clients on human centered design for the built environment. She wrote and produced the documentary short film titled, "What Design Can Do" together with Sarah Robinson. Her *Welcome to Your World: How the Built Environment Shapes Our Lives* (HarperCollins; also published in Chinese, Russian, and Korean) won a Nautilus Book Award in 2017 for its contribution to social and environmental justice, and Goldhagen was an opening-night Spotlight speaker at the AIA National Convention that same year.

A frequent keynote speaker, Goldhagen has won numerous awards and grants (including three from the Graham Foundation for Advanced Studies in the Fine Arts) for her writing on modern and contemporary architecture and landscapes and their psychological and cognitive effects on people. She has published several opinion pieces in the *New York Times*, served as Contributing Editor for *Art in America* and *Architectural Record*, and was the *New Republic's* architecture critic for nearly a decade. Goldhagen also has had a distinguished academic career with scholarly publications that include *Louis Kahn's Situated Modernism* (Yale University) and *Anxious Modernisms: Experimentation in Postwar Architectural Culture* (co-edited with Réjean Legault, MIT Press) as well as numerous essays and reviews in premier architecture- and art-historical journals.

Currently she works in New York City, collaborates with the Academy of Neuroscience for Architecture (ANFA) as a Board Member, and advises various clients on strategies for promoting and implementing human centered design.



Neuroscience Professor
Salk Institute, San Diego, USA

Satchin Panda is a professor at The Salk Institute, California, and author of the book “The Circadian Code”. He was born and raised in Odisha. After completing M.S. in Biotechnology and working in Tamilnadu, he moved to the USA for higher studies.

His research at the Salk Institute, San Diego has focused on circadian rhythms. Dr. Panda’s research findings can have immediate impact on public health by improving the mental and metabolic health of millions of people. He discovered that blue-light sensing nerve cells in our retina mediate the diverse effects of light on mood, sleep, and hormones. This discovery is fueling a new revolution in lighting industry to re-engineer lighting to reduce depression, support sleep, and improve brain health. He also discovered that irrespective of what we eat, maintaining a consistent period of eating and fasting– now popularized as intermittent fasting – can help prevent, manage, and reverse metabolic diseases.



Neuroscience Professor
Salk Institute, San Diego, USA

Thomas D. Albright is Professor and Conrad T. Prebys Chair at the Salk Institute for Biological Studies, where he is Director of the Center for the Neurobiology of Vision and Adjunct Professor of Psychology and Neurosciences at the University of California, San Diego. He specializes in the neural basis of visual perception, memory and visually guided behavior. He seeks to understand how visual perception is affected by attention, behavioral goals, and memories of previous experiences. An important goal of this work is the development of therapies for blindness and perceptual impairments resulting from disease, trauma or developmental disorders of the brain. A second aim of his work is to use our growing knowledge of brain, perception and memory to inform design in architecture and the arts, and to leverage societal decisions and public policy.

He received a Ph.D. in psychology and neuroscience from Princeton University. He is a member of the U.S. National Academy of Sciences, a fellow of the American Academy of Arts and Sciences, a fellow of the American Association for the Advancement of Science, and an associate of the Neuroscience Research Program. He is past-president of the Academy of Neuroscience for Architecture (2012-2014), a member of the National Academy of Sciences Committee on Science, Technology, and Law, and a member of the U.S. National Commission on Forensic Science.



*Anthropologist, Emeritus
Professor of Social Anthropology
The University of Aberdeen, UK*

Timothy Ingold is Emeritus Professor of Social Anthropology at the University of Aberdeen. Following 25 years at the University of Manchester, where he was appointed Max Gluckman Professor of Social Anthropology in 1995, Ingold moved in 1999 to Aberdeen, where he established Scotland's youngest Department of Anthropology. Ingold has carried out ethnographic fieldwork among Sámi and Finnish people in Lapland, and has written on comparative questions of environment, technology and social organisation in the circumpolar North, the role of animals in human society, issues in human ecology, and evolutionary theory in anthropology, biology and history.

He has gone on to explore the links between environmental perception and skilled practice, replacing traditional models of genetic and cultural transmission with a relational approach focusing on the growth of bodily skills of perception and action. Ingold's current interests lie on the interface between anthropology, archaeology, art and architecture. His recent books include "The Perception of the Environment" (2000), "Lines" (2007), "Being Alive" (2011), "Making" (2013), "The Life of Lines" (2015), "Anthropology and/as Education" (2018), "Anthropology: Why it Matters" (2018), "Correspondences" (2020) and "Imagining for Real" (2022). His next book, "The Rise and Fall of Generation Now", will be published by Polity Press in 2023. Ingold is a Fellow of the British Academy and the Royal Society of Edinburgh. In 2022 he was made a CBE for services to Anthropology.



Architect / Master in Neuroscience applied to Architectural Design

*Local Coordination
Speakers' Coordination
Publications*

Ana Karen Angulo is an architect by the University ITESO from Guadalajara, Mexico, and a Master in Neuroscience applied to Architectural Design by the University IUAV from Venice, Italy. She is a candidate in Psychology by the University IEU from Puebla, Mexico.

In 2015, Ana established the firm AKA Architecture, where she integrates psychology and neuroscience research with architectural design. Her work is driven by a passion for interdisciplinary studies, particularly in the realms of environmental psychology, cognitive science, indoor environmental qualities, and architecture. At present, Ana is dedicated to crafting residential spaces that instill a profound sense of tranquility, aiding inhabitants in alleviating the stresses of daily life within the comfort of their homes. Additionally, she serves as a design consultant for a Psychiatric Hospital in Mexico, contributing her expertise to create environments that support mental well-being.

One of Ana's recent and compelling research projects revolves around designing a house for individuals with dementia. The main objective is to enhance their autonomy and overall well-being, with the ultimate goal of prolonging the time they can comfortably live in their own homes.



*MSc in Architecture and Design
Speakers' Coordination*

Social Media

Andréa de Paiva is a Master of Arts (Middlesex University, London) and architect (University of São Paulo) from Brazil. In her work, she seeks to bridge research, education and design. Her research interests involve the interdisciplinary field of cognitive science, applied to architecture and urbanism in order to understand how the physical environment affects individuals and society.

Andréa is a member of the Advisory Council of the Academy of Neuroscience for Architecture (ANFA) and also the vice chair of the ANFA Chapter Brazil. She is the creator of NeuroAU, an online space to disseminate discussions about the possible connections between cognitive science and architecture, design and urbanism. Andréa is the coordinator of the course Interiors & Neuroscience: design focused on people at IED (Istituto Europeo di Design), and she also has helped to create and coordinate courses of neuroscience applied to business at FGV (Fundação Getulio Vargas) and, at FAAP (Faculdade Armando Álvares Penteado), she has created the course Neuroscience Applied to Environments and Creation, which completed its 10th edition in 2022. Andréa also serves as a consultant on neuroscience for architecture, having consulted at Athié Wohnrath, FGV and is a guest contributor to research on how design affects behavior at DPA Architects in Singapore/London.



*Graduate Neuroscientist,
Architectural Designer &
Educator*

*Website Design
Students' Support*

Arkar Hein is a unique interdisciplinary professional with a passion for bridging the fields of architecture, neuroscience, and education. With a strong academic foundation, Arkar holds a Master of Architecture degree specializing in Healthy Urbanism from NewSchool of Architecture and Design, a Bachelor of Architecture, and a Master's degree in Neuroscience and Education from Teachers College of Columbia University.

Arkar's commitment to understanding Alzheimer's disease has led him to explore sensory perception and the role of touch in place cells and grid cells activation. His work aims to deepen our knowledge of Alzheimer's pathology, cognitive map formation, and spatial memory in affected patients, ultimately aiming to contribute to developing innovative architectural designs and interventions for better patient care.

In response to political unrest and educational suppression in Myanmar, Arkar co-founded the Virtual School of Architecture Myanmar, a groundbreaking initiative that provides an accessible education to aspiring architects. As the head of the academic board and a lecturer, he collaborates with architects and educators globally to nurture the next generation of architects. He has also participated in international conferences, sharing his insights and expertise in the interdisciplinary domain.



*PhDc. Neuroscience & Built
Environment; MA Art History;
MDes Interaction; MSc
Architecture; BArch (HHons),
Assoc. AIA, LEED AP*

*Workshop Development
Speakers' Coordination*

Ercüment Görgül has worked as a Senior Designer for Skidmore, Owings and Merrill (SOM) in USA and Tongji University (College of Architecture and Urban Planning).

He studied at the Harvard University Graduate School of Design (GSD) and as a cross-registered student in Massachusetts Institute of Technology (MIT).

Based in Shanghai, since late 2008, Ercu is the founder and lead designer of EGG, a young research, technology and experience consulting firm, providing assistance to businesses on design-based strategies and solutions; and partner of NAX, a small practice on design for bespoke residential, hospitality and retail projects..

As a multiple award-winning educator, designer and technologist, Ercument directed numerous courses and workshops for leading architecture and design programs for top universities and institutions: University of Hong Kong (HKU); Shih Chien University in Taipei; Global Summer School for Barcelona (laaC); and Director of International Programs for Shanghai based Studio Alpha. Other selected teaching appointments include Tsinghua University in Beijing, Tongji and Shanghai Universities in Shanghai, Hochschule für Technik in Stuttgart (HFT) and London-based Architectural Association (AA) Visiting Schools.

Ercu has been an invited guest critic at Harvard and Catholic Universities as well as at University of Southern California in US and at Shanghai University in China. Ercu Gorgul holds a High Honors Bachelor degree from Mimar Sinan Fine Arts University in Istanbul, two Masters from Istanbul Technical University, and a Masters from Harvard University Graduate School of Design. He is currently pursuing a PhD on Neuroscience and Built Environment. Ercu is a registered architect in Turkey and is an Associate AIA and LEED AP in the US. He is a member of ANFA ACE since 2021.



Architectural Designer
Gensler

Participants' Support
Sponsorship

Jessica Patrick is dedicated to the research and design of spaces that enhance users' emotional, mental and physical well-being. She obtained her M.Arch degree concentrating in Neuroscience for Architecture from the NewSchool of Architecture + Design, where she began exploring the intersection of neuroscience and architecture. Her master's thesis, *Developing an Emotionally Intelligent Architectural Language: Raising E.Q. in Prison Architecture*, was awarded the 2019 AIA San Diego Student Design Award for research and design, and it was lauded for suggesting a new approach to design for those in correctional facilities. In this work, Jessica used research in neuroscience to break traditional forms of thought and to design for those who commit crimes. Jessica was a recipient of the Pillar's Scholarship to support her research in the Intersection Between Neuroscience and Craftsmanship, *Doing Work by Hand*.

She was a presenter at the 2020 ANFA Conference, showcasing her work completed together with Eduardo Macagno, *Designing a Retirement Community; Minding the Hippocampus*. To pursue her passion and to use these studies in practical ways, Jessica received WELL Accreditation, to help facilitate building certification to meet the International WELL Buildings Standards. Jessica is preparing for her Architecture License while she works at Gensler Architects. Jessica received her B.A. in Italian Language and Literature, and she lived, worked, and studied in Italy for over four years, immersing herself in the humanities, languages, and Italian studies. She is a native English speaker and is fluent in Italian.



M.Arch, PhD student
Educator

Publications

Julia del Río is an Architect at Gapont Atelier, Liechtenstein and an (online) Architecture Instructor at the Visual College of Art and Design in Calgary, Canada. She is currently pursuing a PhD on Neuroscience and Architecture, studying how the design of the built environment could be used as a brain training tool in order to fight cognitive decline associated with aging and dementia (UPV - Spain). She also works as a design consultant applying the concepts of "Neuroscience for Architecture" and "Healthy Urbanism" in order to create spaces that enhance users' physical and mental well-being by the study of how enriched environments affect brain's neuroplasticity and human behavior.

Originally from Spain, she obtained the degree of Bachelor in Architecture at the Universidad Europea in Madrid. She earned the degree of Master in Architectural Studies with a concentration in "Neuroscience for Architecture" from the NewSchool of Architecture and Design in San Diego. She also worked as a Teaching Assistant in an Architecture Theory class at the same institution. Julia became a member of ACE (ANFA Center for Education) in September 2020, a member of ANFA's Advisory Council and chair of the ANFA's Workshops Working Group in April 2023. She taught a "Lighting Design" course for the Interior Design Master Program at IED Barcelona (Instituto Europeo di Design) and she is part of the faculty of the "Neuroarchitecture applied to the Design of Interior Spaces" program, at UDD in Chile.

She has presented her research work "Measuring the Influence of Daylight in Human Emotions" at different platforms including HAVA Institute, "Congreso Latinoamericano de Neuroarquitectura" and "Bioconstrucción Futura".



Architect, Researcher

Local Coordination
Sponsorship

Maria Chiara Monacelli is an architect and researcher focusing on how the architectural environment influences human perception and behavior and generates an emotional experience. She obtained a Master Degree with honors in Architecture - Built Environment - Interiors at the "Politecnico di Milano" in 2020 and in the same year she completed a post graduated master degree in Neuroscience applied to architectural design at the Luav University in Venice. During her university course she experienced a period of study in Valencia and London and attended interdisciplinary courses at prestigious Universities such as Berkeley (San Francisco, USA), Yale (New Haven, USA) and UAL (London). In January 2021 she won a scholarship to continue her studies and researches in a post graduate master degree in Neuroaesthetics at the University of Rome "Tor Vergata". She gained experience through multiple collaborations in Italy and Spain where she worked as an architect and designer in several renowned architectural and creative firms. In 2022 with Yac Academy, she contributed to design an immersive exhibition based on neuroaesthetic researches for Prada Foundation in collaboration with AMDL Circle studio. She is a member of Board of Directors of Castello di Solfagnano, a luxury property located in Umbria region called the green heart of Italy and she is President and Co-founder of the Mirabilis S.r.l., a real estate company which deals with renovation, regeneration and interdisciplinary cultural projects.



Architect, Ph.D Student

Local Coordination

Ludovica Gregori is originally from Central Italy, she is an architect who places well-being and inclusion at the forefront of her activities. Since 2020, she is a PhD candidate in 'Sustainability and Innovation' at the Department of Architecture at Florence University, where she is also teaching assistant in Environmental Design and Architecture Technology. Her research focuses on how open spaces can serve as healing tools, promoting social interaction and well-being following emergencies. This project proposal won the 2021 New European Bauhaus Prize by European Union. In 2022, she became a member of the Environmental Accessibility Cluster of the Italian Society of Architecture Technology and attended the 'Moving Boundaries' Iberia edition. In 2023, she joined the teaching staff for the Reuse Italy Summer Architecture Workshop (Florence), then she collaborated with the Office for the New Earth charity practice in Cyprus to construct a playground in a refugee camp and subsequently began her role as a visiting researcher at Özyeğin University in Istanbul. Earlier in her career, she was awarded a 10-month scholarship to study in the USA by the American Field Service. At Florence University, she earned her Bachelor's degree in Architecture with a project on inclusive play spaces and her Major Degree from the International Course on Architectural Design with research on post-earthquake temporary living soon to be published as a book. From 2018 to 2020, she gained experience in participatory processes and social housing planning while working at Collective Architecture in Edinburgh. Currently, Ludovica collaborates with Abitare Toscana in Florence to oversee Social Housing projects and works with the Italian Civil Protection in Rome on emergency management. She is one of the voices of 'Materico Architecture Podcast' and she published works on accessibility, urban spaces, and resilient strategies such as 'Learning urban morphology from emergencies' (2021) and 'Design experimentations for the built environment's care' (2021).



Ph.D Candidate in Visual Arts

Local Coordination

Valentina Rizzi is a Ph.D. Candidate in Visual Arts at Luav University of Venice. Her research focuses on the intersections between visual arts and dwelling from a transformative and neurophenomenological perspective, working on the integration of performative profiles as a generative strategy for the deinstitutionalization of domestic spaces.

Originally from Milan, she is based in Venice. She earned a BA in Modern Languages and Literature from UCSC, Milan, and a MA in Visual Arts from Luav, Venice. She has curated exhibitions and workshops centered around the themes of corporeality and space. She is a member of OCIO, the Independent Civic Observatory on Housing and Residency – Venice. Along with Naomi Pedri Stocco Ph.D.(c), she co-founded the project "9mq | Perimetri dell'abitare (9sqm | Perimeters of Living)" focusing on the housing conditions of the Venetian university population.



*Architect, Researcher,
Sound Artist*

*Speakers' Coordination
Publications*

Sofia Boarino is an architect, researcher and sound artist who explores the relationship between sound, space and perception. She obtained her Master's degree in Architecture at the AAM - USI Accademia di Architettura in Mendrisio in 2020 with the project "Hit the Beat", which experimented the relationship between architecture and music. Her work won the Swiss Engineering Ticino Prize in 2021 and was exhibited at the Chiasso's Cultural Center. She attended the PUCP University in Lima as an exchange student and specialised in acoustics. She gained experience through multiple collaborations in France, Italy, Switzerland and America, where she worked as an architect in several architecture and art studios. Since 2017 she has been conducting interdisciplinary research that situates in-between art and science, exploring the themes of mechanical, biological and acoustic resonance in correlation with spaces, landscapes and cities, culminating in an in-depth investigation on sound architecture and neuroarchitecture. In 2018 she patented her first architectural project "Sounds of Etna", and in 2019 she became a fellow of the American foundation Madworkshop (L.A.), with which she realised the project "Témenos". In 2021 an essay on her project "Sound Greenfall - A musical courtship between plants and humans" was published in the 15th edition of the journal Horizonte Weimar, and in 2022 she lectured at the Acoustic Niche Workshop held by the Christophe Girot Chair at ETH Zurich. In the same year she worked as a sound performer at the Metareale exhibition for Fuorisalone Design Week in Milano and at Raw Senses exhibition for Zurich Design Weeks.

She currently lives and works in Zurich as an architect and sound performer and she recently became a member of X=(T=E=N) Studio. Multidisciplinary research and interdisciplinary collaborations generate her artistic work, which translates into a collection of writings, performances, musical compositions, sound sculptures, spatial immersive installations and architectures that broaden the horizons of sensory perception.

“

Thank you, Moving Boundaries, for such a transformative experience which helped me to find a new path! This course gave me access to an amazing community of knowledge and exposed me to information and ideas I was longing to hear after decades of practice. It validated the need to bring architecture back to a human-centered practice. I leave this course with a network of outstanding faculty and participants with whom to share common interests and knowledge that will inspire and support me in my future work.”

“

Building a community of researchers and thinkers, in the way that the Moving Boundaries course accomplished it, is indispensable.”

“

I was delighted and moved to be with my architecture and neuroscience heroes. Beyond all expectations, the friendships, old and new, all expanded! I had the pleasure of meeting, sharing life and ideas, with so many wonderful people from so many different places and backgrounds. ”

“

The majority of the faculty are absolute world-class academics and leaders in their disciplines. It truly was an honor to watch back-to-back lectures from them.”

– Participants of Moving Boundaries 2022-23

FREQUENTLY ASKED QUESTIONS

Who is eligible to apply to the Winter 2023 course?

The course is open to architecture and design professionals, including architects, urban designers, landscape architects, historians, artists, environmental and health experts, interior and product designers, cognitive scientists and psychologists, sociologists, neuroscientists and anthropologists, as well as educators, graduate and postdoctoral students in these disciplines from any part of the world.

In what language will the course be conducted?

Lectures, masterclasses, workshops, and roundtable discussions will all be conducted in English. Several supporting faculty speak Spanish, Portuguese and Italian, and they may be able to help with translation occasionally (we cannot provide continuous translation).

What will tuition cover?

Tuition will cover lectures, masterclasses, workshops, sketching sessions, roundtable discussions, the Certificate of Completion, and two complimentary meals, the Welcome Dinner and Farewell Lunch. Tuition will also cover digital course materials and recordings of selected lectures, as soon as they are edited several weeks after the end of the course.

Can I receive credits for attending?

Credits for the program need to be approved by the university you are currently attending. Check with your academic advisor regarding the procedure for obtaining credits since some institutions require that credits be approved prior to enrolling in the program. Practicing architects may apply (on their own) for AIA learning credits, but the outcome depends on your local chapter and cannot be guaranteed by MB. A Syllabus with a summary of all activities and list of course hours will be provided.

How do I get to Venice and depart from Umbria?

The city of Venice is accessible from around the world, with direct flights available from Europe and with one or two stops, from major cities across the United States, Latin America, Australia, and other locations. Travel in December is considered "low-season" and is therefore less expensive than usual. Lodging will also be more affordable in "low-season". Please plan to arrive in Venice by December 10. If you think that you will suffer from jet lag, please consider arriving on December 8 or 9.

The course will finish in Perugia (region of Umbria, Italy), not in Venice, on Dec.23. There are several options for return flights. Participants and faculty may elect to return to Venice, or they may fly home from Florence, Rome or another nearby airport. It is recommended that you travel from Perugia only after 5pm on Dec.23, since the Farewell Lunch will end by this time.

What supplies will I need to bring?

A laptop or a tablet computer is recommended for the design charrettes. Additionally, a sketchbook, notebook, pens and sketching and/or painting supplies.

How will lodging and meals be arranged?

Participants are responsible for arranging their travel to and from Italy, lodging and meals. Moving Boundaries will provide a list of suggestions. Tuition does not include travel expenses and arrangements. Participants may take advantage of the sign-up list in Google Drive, sharing lodging in order to minimize expenses. Sharing options shall be initiated and coordinated by participants using shared folders created by MB for the group. Two complimentary meals will be provided for all.

Please plan to arrive in Venice by December 10. If you wish to minimize effects of jet lag, please consider arriving on December 8 or 9. Check out in Venice, in the morning of December 20. Plan to check in at your hotel or Airbnb near the Castello di Solfagnano (Umbria region) on December 20 and check out on December 23, as the Course will finish just after lunch. Some participants may decide to remain in Umbria (or in Rome, Florence, or other locations) past December 23.

How much will it cost to attend?

Meals and lodging options are reasonable in the Winter season. You can find the breakdown of average expenses in the course brochure. Please note that tuition fees are excluded from the cost breakdown.

Does the course have a scholarship program?

Yes, 5 full tuition and 18 partial tuition scholarships have been provided.

What resources will be offered before and during the course?

All participants will have access to a detailed course program, the brochure with abstracts of presentations, a collection of digital resources that include articles, book chapters and video lectures, and a course reader. After the course, participants will have access to selected recordings from the course. Additionally, participants will have access to a group communication platform (WhatsApp), where they will be able to interact with one another and uphold their network, during and after the on-site program.

Who are the speakers and how much access will I have to them throughout the course?

You will have access to speakers during all course activities and social events, including occasional meals and coffee breaks, throughout the two weeks. Find the list of speakers and their bios on the brochure and the Faculty page.

Will there be free time and can I explore other locations during the course?

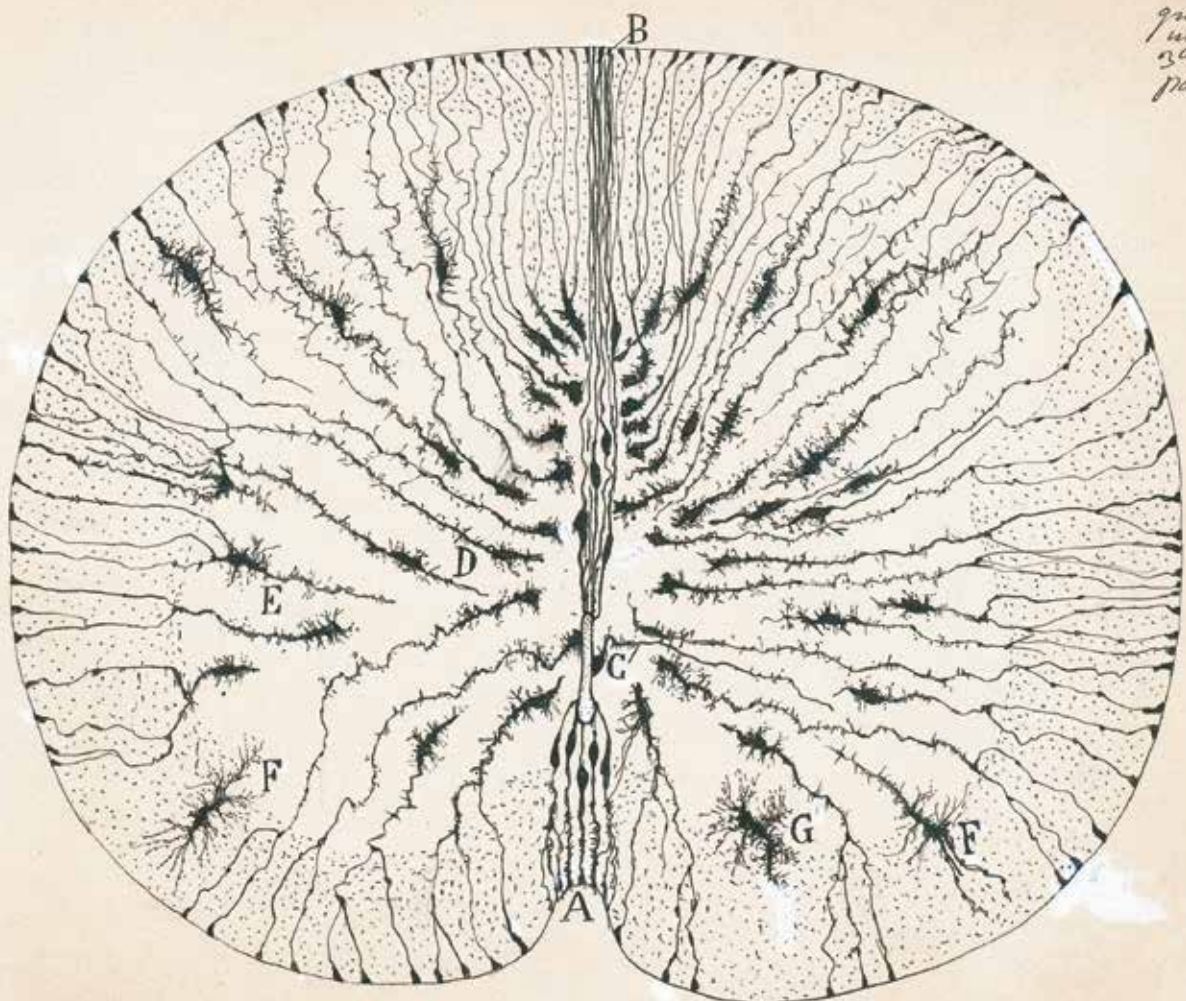
Yes, there will be free time. Please consult the program. We do encourage you to explore the local culture, neighborhoods and cuisine. If you would like to visit additional cities, we encourage you to do so before or after the two-week course. The course is fairly intensive and while it is inspiring and enriching, it is not a "vacation".

Will I need to show proof of vaccination to attend?

It is not mandatory to show the proof of vaccination for this course. We will ask everyone to submit a negative Covid test one-two days before the course start. Masks will not be required.

Can I bring family or friends with me?

Yes, family and friends are welcome to join social events during the course, but they may not attend lectures, workshops or roundtable discussions.



ESTIMATING THE TRAVEL BUDGET

Traveling from U.S. and Canada

<i>Roundtrip airfare</i>	\$ 670	from West Coast	(LAX/San Diego to Venice)
	\$ 670	from East Coast	(NYC to Venice)

Traveling from Europe

<i>Roundtrip airfare</i>	\$ 100—200	from Spain (Madrid; Barcelona)
	\$ 90—130	from United Kingdom (London)
	\$ 90—120	from France (Paris)
	\$ 90—130	from Italy (Rome; Milan)
	\$ 100—200	from Germany (Berlin; Munich)
	\$ 150—300	from Denmark (Copenhagen)
	\$ 300—500	from Finland (Helsinki)

Traveling from Brazil

<i>Roundtrip airfare</i>	\$ 800	(São Paulo to Venice)
	\$ 960	(Rio de Janeiro to Venice)

Traveling from Asia

<i>Roundtrip airfare</i>	\$ 700	(New Delhi to Venice)
	\$ 980	(Dubai to Venice)

Traveling from Australia

<i>Roundtrip airfare</i>	\$ 1400	(Sydney to Venice)
	\$ 1700	(Melbourne to Venice)

Lodging and meals

<i>Lodging Venice</i>	\$ 750	(high price for 10 nights)
	\$ 450	(budget price for 10 nights)
<i>Lodging Umbria</i>	\$ 350	(high price for 3 nights)
	\$ 160	(budget price for 3 nights)
<i>Meals</i>	\$ 500—1200	(Venice - 10 days)
	\$ 80—130	(Umbria - 3 days)

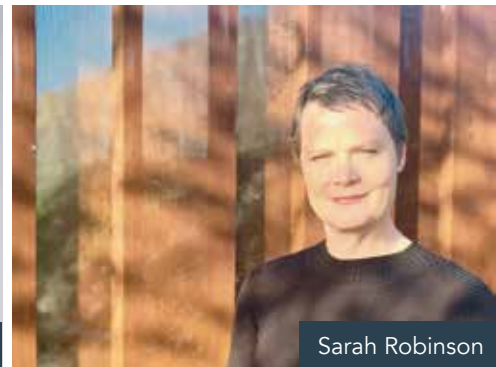
SYLLABUS



Alberto Pérez-Goméz



Vittorio Gallese



Sarah Robinson

LECTURES 23h

The Moving Boundaries course will offer a series of masterclasses and lectures held by internationally recognized experts.

Together, we will experience a new interdisciplinary perspective that has been emerging from the rapidly evolving collaboration between architecture and the “natural human sciences” (neuroscience, cognitive science, psychology, psychophysics, and experimental phenomenology, among others).



Juhani Pallasmaa



David Kirsh

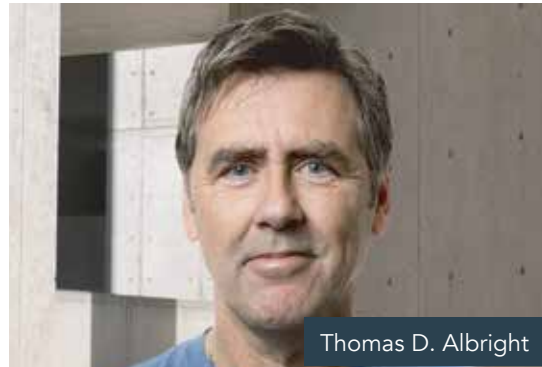


Satchin Panda

LECTURES



Andrea Chiba



Thomas D. Albright



Davide Ruzzon

Theme 1: Perception and Behavior

The architectural profession must place the concern for the full-blooded human being at the very foundation of its practice. Confronting this challenge using a new approach emerging in the rapidly evolving collaboration between architecture and the human sciences, we will investigate the experience of place through multiple disciplinary perspectives—in particular those of phenomenology and neuroscience. We will study how places shape one's behavior and how experiences arise in the interaction of sensory and motor systems, focusing on the tactile, acoustic and resonant qualities of space.



Tim Ingold



Sarah W. Goldhagen



Andrea Pinotti

Lectures about perception and imagination, haptics and memory, peripersonal space and embodiment will inform design applications. We will also discuss how ideas about movement and time can inform new strategies for architectural and urban design.

LECTURES



Cleo Valentine



Guido Pietropoli



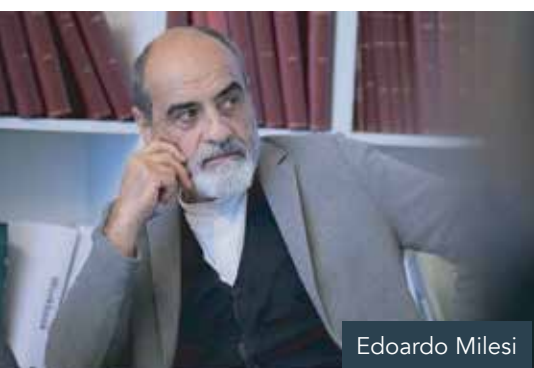
Renato Bocchi

Theme 2: Atmosphere and Mood

The concept of architectural atmosphere blends sensory and emotive aspects of experience.

We will investigate how architectural atmospheres are created by the interaction of seeing, hearing, haptics, and olfaction, and also the senses that register one's own posture, balance, and movement.

We will also study the intricate relationship between emotions, mood and cognitive faculties, and how this relationship is fundamental to experiencing special atmospheres which arise in architectural spaces. The study of atmosphere will allow us to investigate how insights from the objective, third-person perspective of the sciences can be integrated into design.



Edoardo Milesi



Francesca Ferroni



Elisabetta Canepa

In the final days, we will explore how architectural atmosphere and mood can be captured by different methods of architectural representation and how notions of spatial attunement and embodiment can dramatically alter our approach to design education and practice.

ROUNDTABLE DISCUSSIONS AND TALKS

13h



Speakers, guests, organizers, and students will join roundtable discussions to converse all together. These post-lecture dialogues stand as a testament to our commitment to fostering a robust exchange of ideas and insights. This open and natural conversational format, meticulously cultivated by our adept moderators and subject-matter experts, ensures that every participant has the opportunity to contribute and glean insights from the collective wealth of knowledge present in the room.



Through this dynamic interaction, participants not only deepen their understanding of the subject matter but also cultivate a sense of community and shared discovery, culminating in a transformative educational experience that extends far beyond the confines of the lecture hall.

WORKSHOPS

13h



To better comprehend the multisensory nature of the architectural design process and experience and develop a tectonic sense of architecture, the program includes immersive workshops.

Convinced of the importance of drawing as a tool to comprehend the history, the structure, and the architectural essence of a city, course participants will go to different public spaces to experience live sketching outdoors.



WORKSHOPS



An important part of our program are the workshops thoughtfully organized and guided by our faculty.

These workshops help participants understand architecture in a unique way – not just through sight, but also by involving other senses. The expertise of our faculty empowers participants to cultivate a profound tectonic sense, refining their ability to perceive and appreciate the intricate dance between space and form in the architectural realm.



Our workshops extend concepts and takeaways from lectures by faculty and allow participants to practice applying new methods to design. They are also encouraged to discuss (and draw) new applications in their everyday practice in the office or academy.

TOURS IN VENICE

7h



Grounded in the culture of Venice, Italy, participants will experience the rich cultural landscape of the city, which is the birthplace of the famed architect Carlo Scarpa. As they wander through the captivating Venetian Gothic and Renaissance buildings, participants will find themselves transported to a bygone era of artistic splendor and architectural innovation.

This immersive journey will not only provide insight into the profound influence Venice had on Scarpa's creative genius but also offer a deeper appreciation for the timeless beauty and historical significance that define this city.



Along the way, we will also visit significant landmarks including Sala Mario Baratto, Querini Stampalia, and Negozio Olivetti each adding another layer to our exploration of Venice's cultural and architectural tapestry.

FIELD TRIP TO VENETO REGION

December 16th

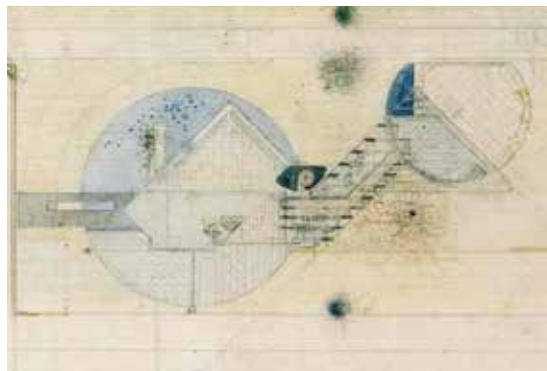


Participants will be offered tours of buildings by Scarpa. On day 6 we will visit Brion Cemetery, a masterpiece where Scarpa's meticulous attention to detail and his harmonious blend of natural elements with structural forms are on full display.

We will visit the Gipsoteca Museum, which houses a collection of plaster casts of classical sculptures, located within the heart of Scarpa's architectural creations. Our exploration to Scarpa's works in Veneto will unveil his ability to infuse historical context with modern innovation, as seen in the intricate interplay of textures and materials in his architectural compositions.



10h



These enriching experiences will provide participants with a profound understanding of the artistic evolution that has shaped not only Scarpa's legacy but also the broader Italian design landscape.

Our journey culminates in Fabbrica, a masterful creation envisioned by the renowned architect Tadao Ando, where every corner and line bears witness to the seamless fusion of innovation and timeless design, leaving an indelible imprint on our architectural exploration. We will enjoy a holiday party together at Fabbrica.



BUILDINGS

**Venice, Italy**

Aula Mario Baratto, Ca' Foscari University, Carlo Scarpa.
 Querini Stampalia, Carlo Scarpa.
 Negozio Olivetti, Carlo Scarpa.

**Veneto Region, Italy**

Tomba Brion, Carlo Scarpa.
 Gipsoteca Canova Museum, Carlo Scarpa.
 Fabbrica, Tadao Ando.

TRAIN TRIP VENICE-FLORENCE-PERUGIA

December 20th



On the tenth day of the program, we'll embark on an engaging train journey to the captivating castle that will be our home for the final three days of lectures and workshops. This journey will be a unique blend of exploration and anticipation, beginning with a stop in Florence, where participants will have the opportunity to immerse themselves in the city's rich artistic and architectural heritage. Continuing our train ride through the picturesque Italian countryside, we'll then head to our ultimate destination, the charming city of Perugia.



This transition from Florence to the serene surroundings of the castle underscores the transformative nature of our program, symbolizing the passage of knowledge and experience while allowing us to discover the essence of Italian culture and creativity through both physical and intellectual exploration.

UMBRIA

3:30h



During the program's final three days, participants will have the privilege of immersing themselves in the picturesque setting of Castello di Solfignano, nestled in the scenic landscapes of northern Umbria between Perugia and Gubbio. This charming location, surrounded by rolling hills and verdant countryside, offers an ideal environment for focused creative exploration.

A short thirty-minute drive away awaits the St. Francis of Assisi Convent, a place of profound inspiration for renowned architect Louis Kahn.



DISCUSSIONS AND SOCIAL EVENTS



The Moving Boundaries course not only enriches minds through its academic pursuits but also fosters vibrant social connections. We recognize the importance of camaraderie, and thus, our program offers social events that provide participants with the opportunity to mingle with our esteemed faculty.

These events serve as a delightful segue for participants to engage in informal discussions, enabling them to learn more while enjoying a convivial environment. These interactions not only strengthen the bonds among participants but also encourage the exchange of ideas and insights in a relaxed and friendly setting, enhancing the holistic learning experience of the course.



SPONSORS

Con il sostegno della



Fondazione Perugia

Private, non-profit, autonomous and independent body. Through the investment of the assets at its disposal, it generates proceeds made available to the reference territory exclusively for socially useful purposes and for the promotion of economic and cultural development.



MONACELLI ITALY

Monacelli Italy is the only cosmetic company certified as "development company". For more than 30 years Monacelli has been focusing on growing salons, helping owners and employees make their own dreams of personal and professional development come true.



TECLA - Case e Strutture in Legno

Trading company that cares about wooden construction: the company's aim is to create living places capable of building human relationships necessary to raise new existential awareness.



COLACEM

Colacem S.p.a. founded in 1966 is a leading company in the production of cement. Thanks to a modern and forerunning corporate culture, its use of the best available technologies, and its strong care of the environment, Colacem may well be considered one of the most advanced companies both on the national and international scene.



COMEAR

CoMeAr and BSP have been operating in the precision mechanical manufacturing sector for over 30 years and are specialized in the custom production of components of primary importance and high complexity for industrial, aeronautical, aerospace, medical, railway and energy applications.



Castello di Solfagnano

Castello di Solfagnano is a luxury property born inside a noble castle, dating back to the 12th century. A place of regeneration of the soul and body where well-being becomes holiday, where experience becomes knowledge and passion thanks to the cellars and holistic paths. Castello di Solfagnano is the luxury of well-being in Umbria: the green heart of Italy.

SPONSORS

REQUEST FOR SUPPORT

Moving Boundaries needs funding in order to support its ongoing success and growth. Funds raised will go directly towards the following items:

- Develop a full range of initiatives aligned with our Mission, along four lines of emphasis: Education, Research, Practice and Advocacy.
- Establish a fund for future courses and workshops in diverse communities that have little access to this knowledge.
- Establish a scholarship fund for students who cannot afford tuition
- Create publications summarizing results of this work.
- Develop and maintain the website, providing information and resources to educators and students online.

DONOR BENEFITS

- Contributors of \$50 or more will be featured in our digital program brochure.
- Contributors of \$250 or more will be featured in our program brochure (digital and hard copy) and on the website.
- Contributors of \$500 or more will additionally have their logo and website address displayed in our program brochure and on the website. Contributors will also receive a hard copy of our course publication.
- Contributors of \$1000 or more will receive all benefits above and will additionally receive a book signed by one of the faculty members. Event hosts will thank contributors in their address to the audience, and their logo will be displayed at the opening event of the course in Venice.
- Contributors of \$5000 or more will receive all benefits above and will additionally be invited to attend a dinner with several distinguished faculty of our course, at one of the course locations.

PARTNERS

Con il patrocinio di



Regione Umbria

Regione Umbria

The patronage and use of the logo constitute the maximum moral recognition that the President of the Umbria Region can grant to initiatives of particular institutional interest, wherever implemented, which contribute to promoting and enhancing the Region itself, its territories and the Umbrian community.

Con il patrocinio di



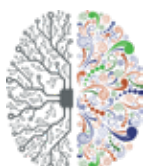
Rai Umbria

RAI S.p.A. is Italy's exclusive public radio and television service provider, holding a significant position as the country's premier television hub. As one of Europe's largest communications companies, it ranks as the fifth-largest television group on the continent.



Fondazione Umbra Per L'Architettura

The Galeazzo Alessi Umbra Foundation for Architecture (FUA) is a private law entity established on 21 May 2010 by the Order of Architects, Planners, Landscapers and Conservationists of the Province of Perugia.



ANFA - Academy of Neuroscience for Architecture

Nonprofit organization whose mission is to promote and advance knowledge that links neuroscience research to a growing understanding of human responses to the built environment.

San Diego, California, USA



Salk Institute

The Salk Institute for Biological Studies is a scientific research institute. Independent, non-profit institute founded in 1960 by Jonas Salk, the developer of the polio vaccine.

La Jolla, San Diego, CA



University of California, San Diego

The University California San Diego is one of the world's leading public research universities.

La Jolla, San Diego, CA



The Centre for Conscious Design

International grassroots think-tank working to address social issues and public health through conscious design.



NEUROAU

Online space created to disseminate discussions about the possible connections between cognitive science and architecture, design and urbanism.



IPOG - Institute of Postgraduate and Graduate Studies

Educational institution with experience in training professionals with solid profiles for the job market.

THANK YOU

*Grazie
Merci
Gracias
Obrigado*

ありがとうございました

The Moving Boundaries Winter Program would not happen without the support of our Sponsors and Donors. Your contribution helps to support our speakers and provides scholarships for our participants. Your generosity also helps to distribute the content of this course throughout the architectural and scientific communities.



*Спасибо
Danke
Кыааууууутайп*

“

Moving Boundaries has erased boundaries for me, increasing the reality of a wider-world community of interest and commitment to making lives better.”

“

It is rare when a disparate group of experts on several subjects comes together to form a community of like-minded activists who want to improve the world for all people. Moving Boundaries created such a community: one of the most powerful alliances of scientists and architects ever assembled.”

“

What an inspiring two weeks! Congratulations on putting together an information-packed and fun course. There is nothing better than seeing old friends, making new ones, while sharing knowledge and endless possibilities for future activities.”

“

I have attended hundreds of conferences and courses around the world, and this was the best in terms of both content and ambiance.”

– Participants of Moving Boundaries 2022-23



MARWA ABDEL-LATIF

A.Prof. of Urban Design & Planning,
Ain Shams University, Head of Research,
Adze Designs Workplace Studio,
Cairo, Egypt



DINA ABDO

Architect, Project Coordinator
Bachelor of Architectural Engineering,
M. Arch. in Digital Design & Fabrication
Lebanon



YOHANY ALBORNOZ

Architect, Architectural Acoustics
Visual Design and Branding
NAAD Master, IUAV
Miami, FL, USA



TANEEM ALJAHANI

Lecturer- Interior Designer, Yanbu
Industrial College, Royal Commission
for Jubail & Yanbu
Yanbu, Saudi Arabia



STAVROULA ANGELAKI

PhD candidate, KTH Royal Institute of
Technology, Interior Designer, Lighting
Stockholm, Sweden



ANA ANTICO ARCIUCH

Architect, Architecture & Urbanism,
Interior Design & Neuroarchitecture
Santiago de Chile, Chile



VALERIA ANTICO ARCIUCH

PhD in Biology, Postgraduate in
Translational Medicine
Buenos Aires, Argentina



SOKAINA ASAR

MArch. Pratt Institute,
Graduate Architecture & Urban
Design: Architecture
Brooklyn, New York, USA



MARIA ASLAM

Architect, Writer, Independent
researcher, MArch, McGill,
ArchWorks-Principal Architect
Pakistan, Canada



JOANNA AZZI

Interior Architect
Abidjan, Ivory Coast



ANNETTE BAJEMA

Consulting Architect, Founder of Reframe
Design Collaborative
Dallas, Texas, USA



**REGINA
BARBOSA / MELETTI**

Architect, Postgraduate in Marketing
Graduate in Architecture and Urbanism
Rio de Janeiro, Brazil



DIONYSIOS BONIKOS

Civil Engineer, Founder
Bonikos Arch + Design,
University of Athens
Zakinthios, Greece



ŞEYMA NUR ÇALIŞKAN

M.Sc. Architect, Researcher, Senior
Lecturer, Department Coordinator at TOBB
University of Economics and Technology
Tashkent, Uzbekistan



ALESSANDRO CASTIGLIONI

Architectural Designer
Foster + Partners
London, UK



RENEE CHRISTENSEN

Researcher, Director,
International WELL Building
New York City, USA



ANDREA CONGIU
Junior Designer, Bachelor Student
Habitat Design/Rome
Green Urbanism& Social Design/Milan
Milan, Italy



DANIELA COPPOLA
Architect and Urbanist
Founder of Coletivo Arquitetos
Orlando, Florida, USA



AKANKSHA DEOLEKAR
Architect, Graduate student University
of California Los Angeles (MS AUD)
Los Angeles, USA



BRIGITA DOMIKOVÁ
Architect, MSc. Architecture and Design
STU, Bratislava
Bratislava, Slovakia



RACHEL DUGGAN
Neuroscientist/Psychologist, MSc.
Psychology/ DCU, BSc Neuroscience/ UCD
Greystones, Ireland



VALENTINA FESENKO
PhD Candidate, Department of Urban
Planning and Design of the Faculty of
Architecture, (BME).
Budapest, Hungary



MARTINA FRATTURA
Architectural Lighting Designer,
Head of the open think-tank
"The Beauty Movement"
Lisbon, Portugal



BRADLEY FRIEDMAN
Student- M.Arch. University of Southern
California, B.S. Architecture & B.S.
Neuroscience, Tulane University,
Atlanta, Georgia



ZLATINA GEORGIEVA
Student, MSc Applied Neuroscience
King's College London
New York, USA



**KEERTHANA
GOVINDARAZAN**
Ph.D. Student in Architecture, Mass
Communication & Psychology IEL, CIE
State College, Pennsylvania, USA



TUWANDA GREEN
Architect, Adjunct Professor
Virginia Tech - Washington Alexandria
Architecture Center (WAAC)
Alexandria Virginia, USA



NOURA HADDAD
Architect
London UK



MAREN HAWIGHORST
Architectural Psychologist
PhD Student
Stuttgart, Germany



BARBARA HOLZMANN
Architect, Interior Design, Decor &
Ambience, PUCRS
Architecture and Urbanism, UniFil
Londrina, Brazil



JEN JAMES
LEED AP BD+C, EDAC
Director of Research & Strategic
Design, CMK
Washington DC / Durham NC US



JUNE JORDAAN
PhD in Architecture,
Architect & Senior Lecturer, Cape
Peninsula Univ. of Technology
Cape Town, South Africa



MICHAEL JULIEN
Architectural Designer,
Unfold 473
St. Georges, Grenada, (West Indies)



FUNDA KARAGOZ
Architect, Project Manager
İTÜ - Faculty of Architecture, MBA,
M. of Neuroscience, Istanbul
Istanbul, Turkey



ANA MARIJA KOROŠEC
Architect, Real Estate developer at
Neurotekonika s.p.
Ljubljana, Slovenija



HEATHER LUKE
Interior Architect, Architectural interiors,
landscapes, restoration
Taunton, UK



KUN LYU
Ph.D. Student, in Architecture USYD
Ecological Sustainable Design,
Biophilic Design, Architect in East China
Sydney, Australia



CLARISSA MACHADO
Architect & Urban Planner
NAAD Master, IUAV
Treviso, Italy



GLADYS MAESTRE
Professor, Department of
Neuroscience, University of Texas
Rio Grande Valley, Rancho Viejo, TX, USA



HOORAIN MAHVAR
Architect, Neuroscience Researcher
National College of Arts, Pakistan
Università Iuav di Venezia, Italy
Karachi, Pakistan



YELENA MCLANE
Ph.D., Assistant Professor, Dep. of
Interior Architecture & Design,
Florida State University
Tallahassee, FL, USA



BIJAL MEHTA
Assistant Professor of Neurology
David Geffen School of Medicine,
UCLA
Los Angeles, CA, USA



ALBA MENDEZ GARCIA
Neuroarchitect, Founder of
Qualia Estudio www.qualiaestudio.com
Barcelona, Spain



JAVIERA MESA
Architect
University of Chile, Atypic Arq
Santiago, Chile



JENNA MIKUS
Founder & Managing Director
(Eudae Group), PhD Candidate &
Guest Lecturer (QUT)
Brisbane, Australia



CARLA MILEO
Student and Researcher- M.Arch.
M.Arch., B.Biomed Neuroscience,
Diplang Italian, University of Melbourne
Melbourne, Australia



**ABDUL BASEER
MOHAMMED**
Architect, MSc Psychology, B. Architecture
Jeddah, Saudi Arabia



EMANUELE DE MOLINER
Architect and Urbanist
Balneário Camboriú- Brazil



ANNA NEUBAUER
Project Designer, EDAC
Pacific 33 Architects
San Diego, California, USA



TAHRA NOUR
Architect, Urban designer
Dubai, United Arab Emirates



PATRICIA PALTEN
Senior Physician, MA DipArch (Cantab),
MSc Public Health, Meisterschülerin
Fine Arts, University of the Arts Berlin
Biel/ Bienne, Bern



TRUPTHI PANICKOR
Architect, Design Associate in Dekker
Perich Sabatini, USA
Albuquerque, NM, USA



CARLO-LUIGI PASINI
Researcher, Arxitek Inc.
Italy/ Canada



ELENA PAVLOVA
Interior architect
Bali, Indonesia



FARAHBEE RAHMAN
Architect, Architectural Lighting Designer
M.Sc. Architectural Lighting Design/ KTH
Visiting Faculty/ APIED, India
Dhaka, Bangladesh



MIZAN RAMBHOROS
MSCA-PF Neuroaesthetics/ U. Vienna,
PhD History, specialising in GeoHumanities,
M.Arch/ University of KwaZulu-Natal
Vienna, Austria



TAINAH RAMOS
Interior designer, Student-M.Science in
Emotions, Federal University, Rio de Janeiro
ISCTE, Lisbon, Grad. Archit. & Urbanism
Lisbon, Portugal



CHARLIE RAY
Principal at The Green Room
Collaborative, Landscape Architecture
Scottsdale, Arizona, USA



STEFFI REYES-THOMAS
Artist, Holistic Designer, Founder,
Holistic-Spaces Design Consultancy
San Diego, CA, USA



TERESA RIBEIRO
Architect, Board Member & Director
of the Project Department
in Irmãos Mota, Lda
Lisbon, Portugal



CARINA ROSE
Architect, Designer, Ecologist,
Movement Performer, Visual Artist
Montreal, Canada



CAROLINE ROSENZWEIG
Student M.S. Arch., TUDelft
Delft, The Netherlands



MARCELO SALUM
Architect and Urbanist,
Marcelo Salum Arquitetura
Florianópolis and São Paulo, Brazil



MARTA SANIEWSKA
Environmental Psychologist,
Foster + Partners (Urban Design)
London, UK



ANDREIA SCHMIDT

Architect, Director of the Project Department, Schmidt Engineering, Weston, Florida



JULIANA SCHUCK

Architect, Huma Arquitetura Porto Alegre, Brazil



SOPHIE SCHULLER

PhD student, Technical University of Eindhoven (TU/e); and EMEA Head of Applied Research Cushman & Wakefield Amsterdam, The Netherlands



KATIA SIQUEIRA

Co-creator of Neuro_juntos, Post-graduation in Neuroarchitecture, IPOG Juiz de Fora, Minas Gerais, Brazil



ARIELLE SPENCER

PhD Student - Planning, Design, and the Built Environment Clemson, South Carolina, USA



CHRISTOPHER THAI

Architectural Designer, California Polytechnic State University Pomona Tucson, Arizona, USA



LAVINIA TOMMASOLI

Architect, PhD candidate (DICEA) & MSc. at Sapienza University of Rome, Rome, Italy



VIVIAN TORRES

Architect, MArch. Candidate, Univ. of Luxembourg, Associate AIA (NY) Luxembourg



LAURA ULLOA

Project Leader, Architecture and Urban Planning Graduate, Pre-PhD Fundamental Neuroscience Paris, France



MARTINA VAN SCHOOTE

Interior Architect at Martina Van Schoote Company, & BLAF Architecten Sint-Niklaas, Belgium



ALEXANDRA WOODS

Architect, Cert. Passive House Designer, Research Assist. & MArch Research Candidate (UTS) Sydney, Australia



KEVSER YILDIZ

Ph.D. Student Yildiz Technical University Istanbul, M.Sc. Architect, Researcher, Virtualogie Design Thinking Company Eskişehir, Türkiye



JONATHAN YOAS

Architect & Lecturer at Parahyangan Catholic University, Indonesia PhD in Architecture/ University of Sydney, Sydney, Australia



ECE YÜKSEL

Architect & Graduate Research Assistant University of Florida, USA Florida, USA



ANASTASIIA ZOLNIKOVA

Architectural Journalist Historian of Architecture Vilnius, Lithuania

“

The course created an incredible sense of community and belonging. A group of talented people came together in two cities, passionate and determined to revolutionize the way architecture is created.”

“

Attending the Moving Boundaries program has been monumental for my life. It was a unique and extremely special experience. The incredible people I met and the work I encountered have inspired me and encouraged me to engage in further research and education.”

“

My participation in this course was one of the highlights of my entire career. It was challenging and nourishing to finally meet in person with some of the authors who most influenced my work and to interact with them in such an inspiring context!”

“

Participation in the Moving Boundaries course was a meaningful and empowering experience. I learned so much in just two weeks!

– Participants of Moving Boundaries 2022-23

MOVING BOUNDARIES
www.mb2023.org